

Working Instructions

- mechanical -



Xperia™ miro

ST23i, ST23a

CONTENTS

1	Exterior Views.....	4
1.1	ST23i, ST23a.....	4
2	Tools	5
3	Disassembly.....	6
3.1	Cover Battery Assy	6
3.2	Battery.....	6
3.3	Rear Cover Assy	7
3.4	Core Unit Label.....	8
3.5	Tape Connector & Sub Board Assy	8
3.6	Tape Connector & Cover Front Assy	11
3.7	Tape ZIF Connector & FPC Link.....	12
3.8	RF Cable & Main PBA	13
4	Replacement	15
4.1	Cover Battery Assy	15
4.2	Core Unit Label.....	16
4.3	Key Power.....	17
4.4	Key Volume	19
4.5	Rear Cover Assy	21
4.6	Speaker & Adhesive Speaker	22
4.7	Rubber Mic	24
4.8	Rubber Cap.....	25
4.9	Vibrator	26
4.10	Deco & Adhesive Deco	27
4.11	Gasket Speaker	30
4.12	Water Indicator	31
4.13	Tape Connector (on Sub Board Assy)	33
4.14	Sub Board Assy	33
4.15	Tape Connector (on Main PBA).....	33
4.16	Cover Front Assy	33
4.17	Receiver & Adhesive Receiver	34
4.18	Rubber Proximity Sensor	36
4.19	Tape ZIF Connector.....	37
4.20	FPC Link	37
4.21	RF Cable	37
4.22	Conductive Tape Receiver.....	38
4.23	Gasket Main Board.....	39
4.24	FPC SIM SD	40
4.25	Shielding Cover PWR.....	42
4.26	Shielding Cover BB.....	43

4.27	Shielding Cover RF	44
4.28	Conductive Tape Camera	45
4.29	Camera & Cushion Camera	46
4.30	Board Swap - Replacement	49
4.31	Board Swap – Change Label	49
4.32	Board Swap – Customize of Software	49
5	Reassembly.....	50
5.1	RF Cable	50
5.2	FPC Link & Tape ZIF Connector.....	50
5.3	Cover Front Assy & Tape Connector.....	51
5.4	Sub Board Assy & Tape Connector	53
5.5	Rear Cover Assy	56
5.6	Core Unit Label.....	57
5.7	Battery.....	57
5.8	Cover Battery Assy	58
6	Revision History	60

*For general information about mechanical repair related issues, refer to
1220-1333: Generic Repair Manual - mechanical*

1 Exterior Views

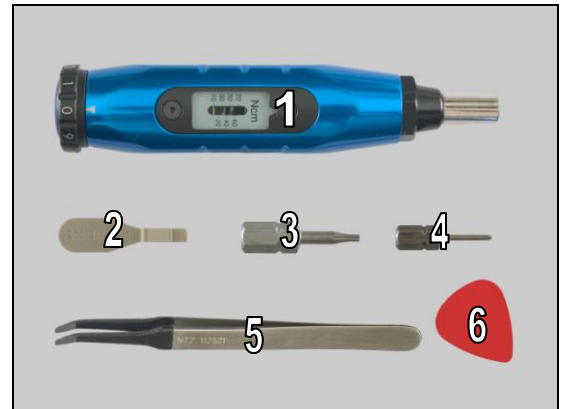
1.1 ST23i, ST23a



2 Tools

SPECIAL TOOLS

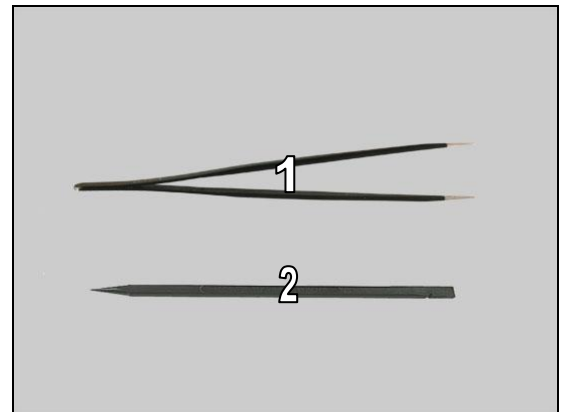
1. Torque Screwdriver
2. Front Opening Tool
3. Bits (T5)
4. Bits (Philip screw)
5. Flex Film Assembly Tool
6. Guitar Pick



For part no's on the tools above, refer to the 'Tools Catalogue/Matrix'!

STANDARD TOOLS

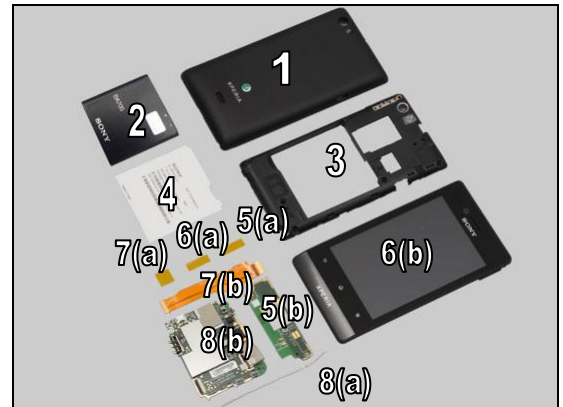
1. Tweezers
2. Nylon Pointer



3 Disassembly

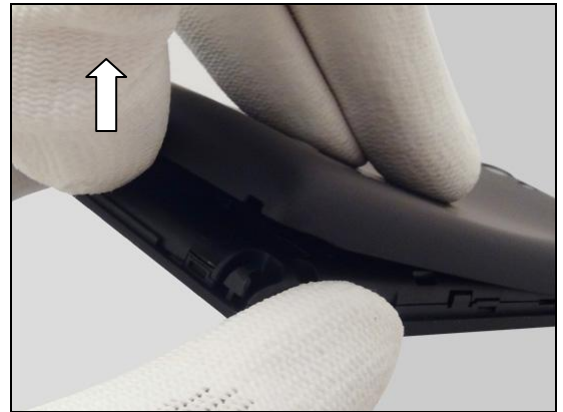
The disassembly is done in the following order:

1. Cover Battery Assy
2. Battery
3. Rear Cover Assy
4. Core Unit Label
5. Tape Connector (a) & Sub Board Assy (b)
6. Tape Connector (a) & Cover Front Assy (b)
7. Tape ZIF Connector (a) & FPC Link (b)
8. RF Cable (a) & Main PBA (b)



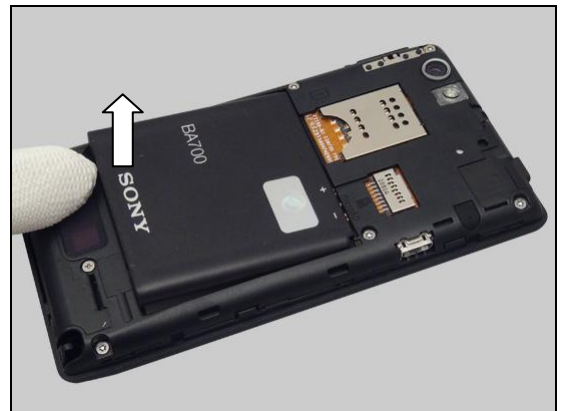
3.1 Cover Battery Assy

Insert a finger into the gap as shown in picture and gently pull upwards to release the hooks of the Cover Battery Assy.

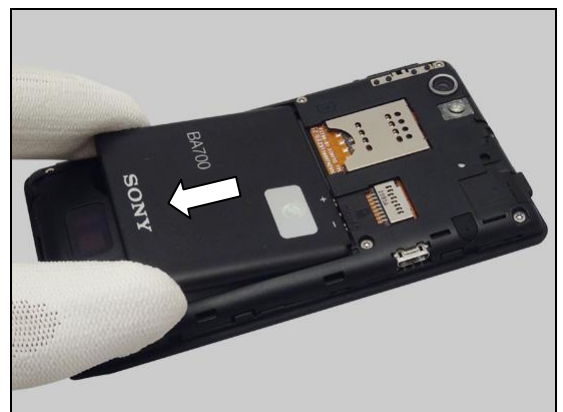


3.2 Battery

Insert a finger and raise the bottom of the Battery to release it.



Remove the Battery.



Disassembly

3.3 Rear Cover Assy

Remove the six Screw (T5) M1.6*L3.8 by using a screwdriver with Bits (T5).

Scrap! Not to be reused!



Remove the Screw M1.6*L2.6 by using a screwdriver with Bits (Philip screw).

Scrap! Not to be reused!



There are seven hooks securing the Rear Cover Assy.



Insert a Front Opening Tool as shown and gently pull upwards to release the hooks.



Disassembly

Do the same on the opposite side.



Gently lift up the Rear Cover Assy to release the hook on the top side and remove it.

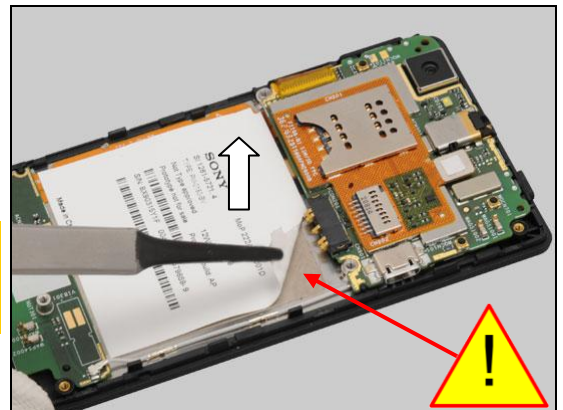


3.4 Core Unit Label

Carefully peel off the Core Unit Label by using a Flex Film Assembly Tool.

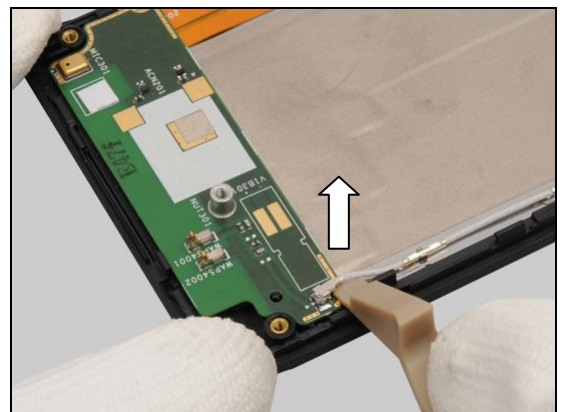
Scrap! Not to be reused!

Be careful! Do not damage the tape and the FPC Link under the Core Unit Label!



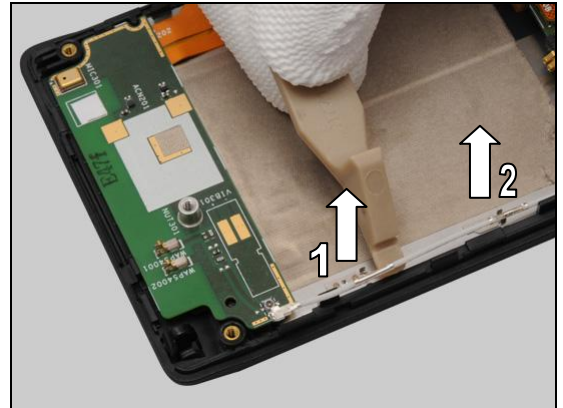
3.5 Tape Connector & Sub Board Assy

Disconnect this end of the RF Cable.

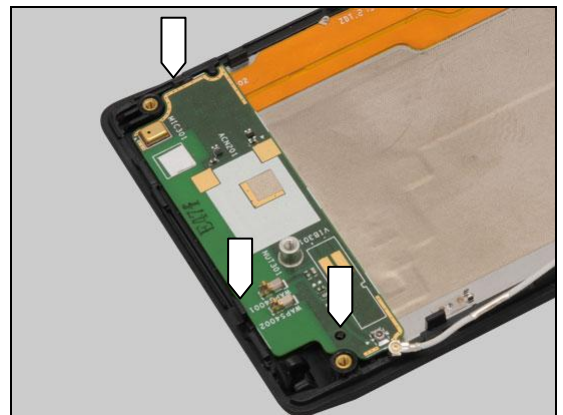


Disassembly

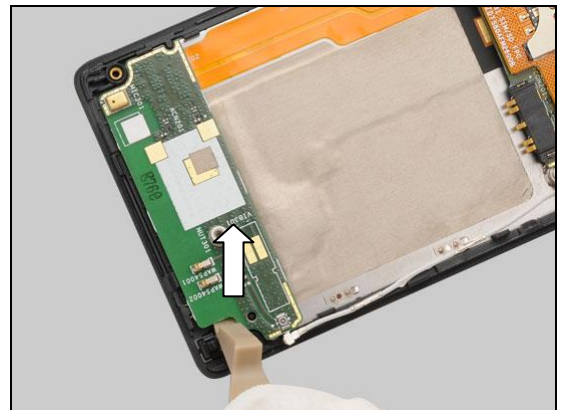
Release the RF Cable from the two hooks.



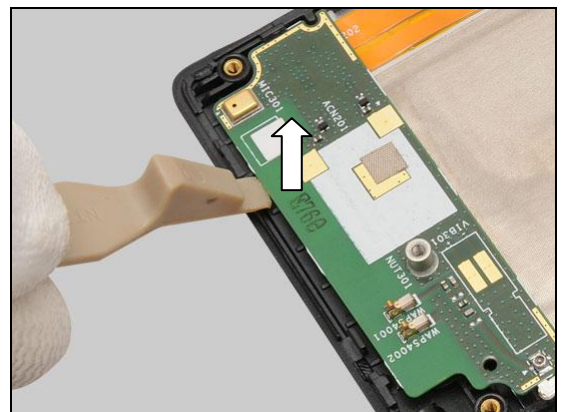
There are three hooks securing the Sub Board Assy.



Insert a Front Opening Tool as shown in picture and gently pull upwards to release the hooks.

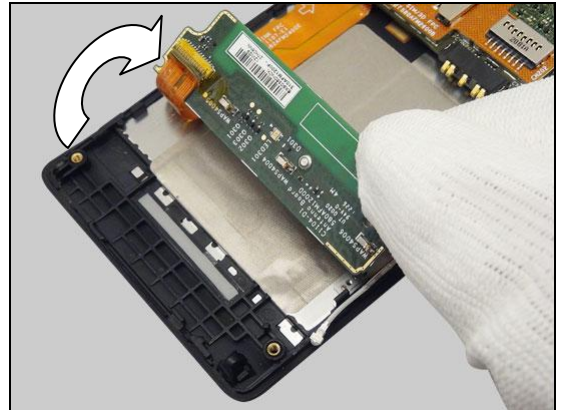


Do the same on the opposite side to release the Sub Board Assy as shown.



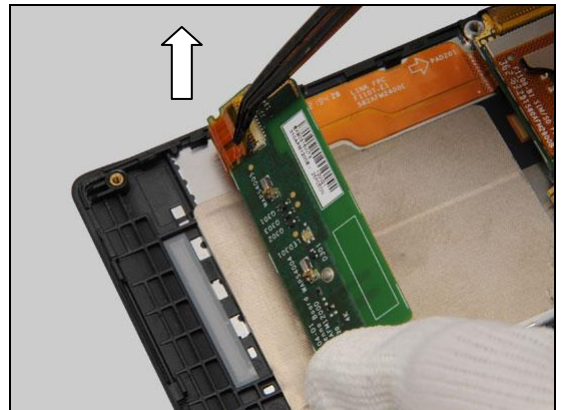
Disassembly

Turn it over.

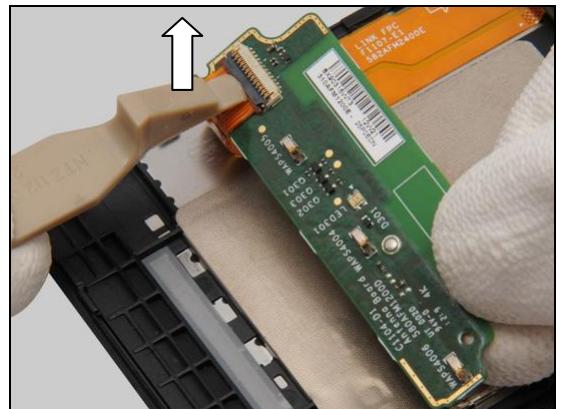


Peel off the Tape Connector by using a Flex Film Assembly Tool.

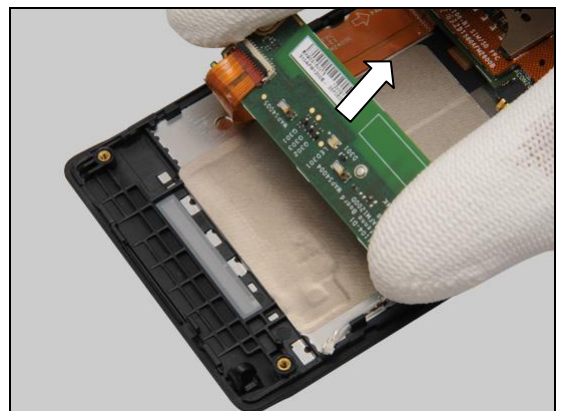
Scrap! Not to be reused!



Unlock the ZIF connector.



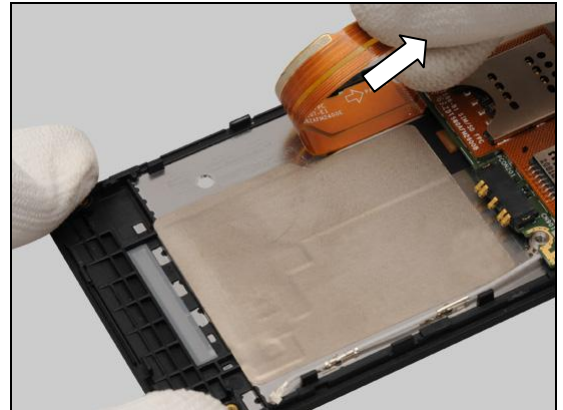
Remove the Sub Board Assy.



Disassembly

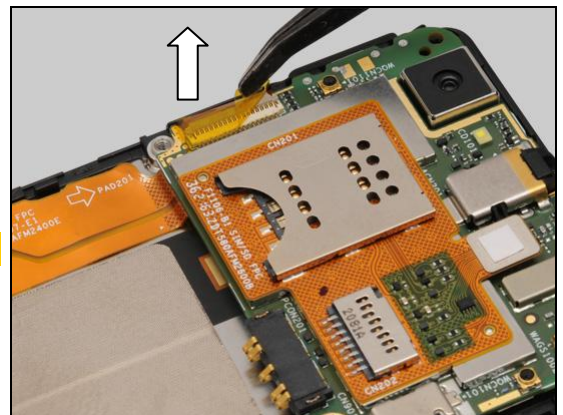
3.6 Tape Connector & Cover Front Assy

Gently pull upwards to detach the FPC Link from the Cover Front Assy.



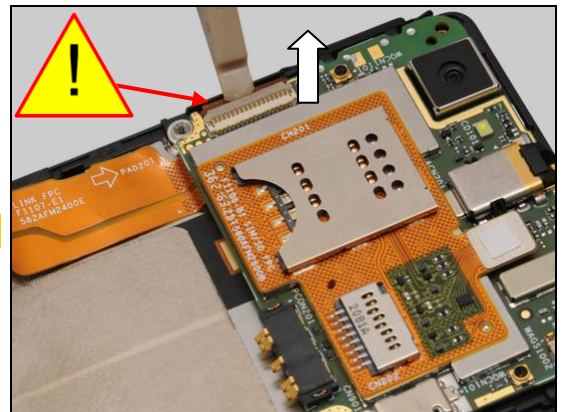
Gently peel off the Tape Connector by using a Flex Film Assembly Tool.

Scrap! Not to be reused!

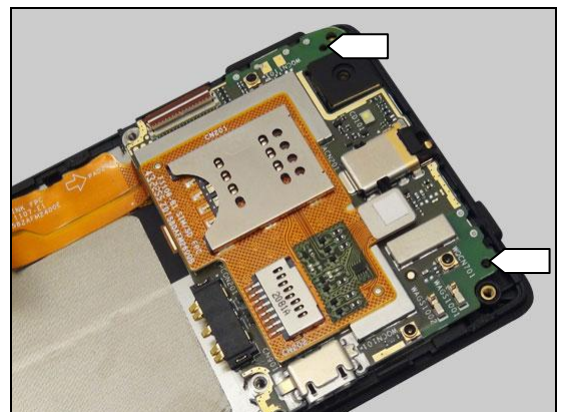


Unlock the ZIF connector.

Be careful! Do not pull out the FPC!

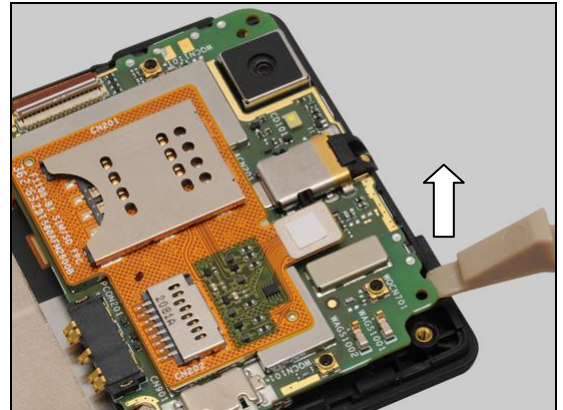


There are two pegs securing the Main PBA.

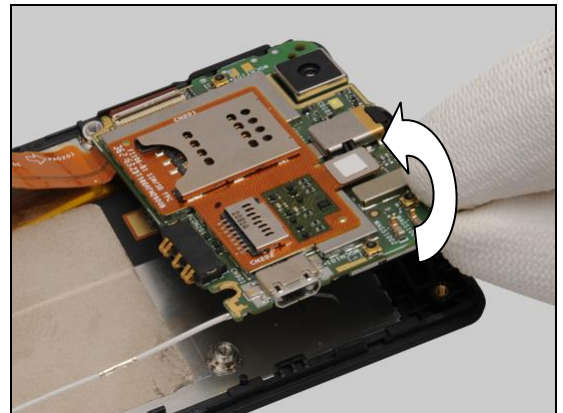


Disassembly

Insert a Front Opening Tool as shown and gently pull upwards to release the Main PBA.

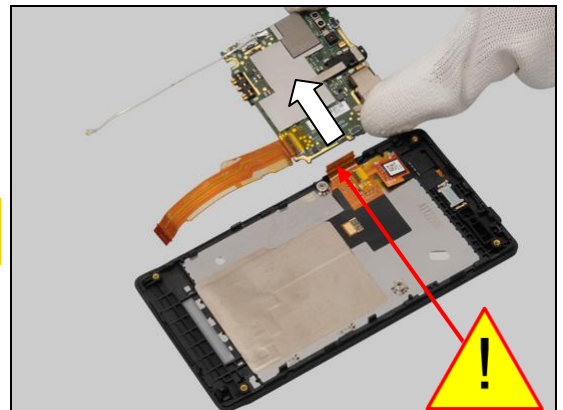


Turn the Main PBA over.



Remove the Main PBA.

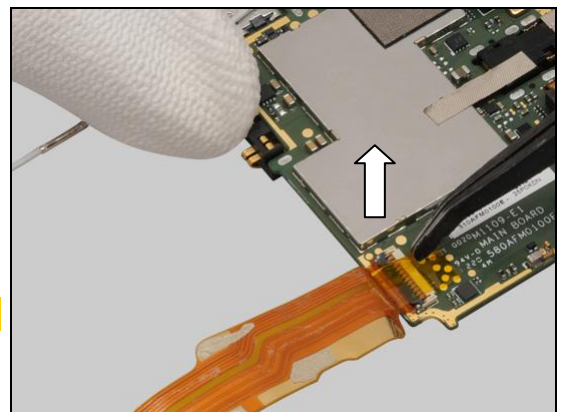
Be careful! Do not damage the FPC of the Front Cover Assy!



3.7 Tape ZIF Connector & FPC Link

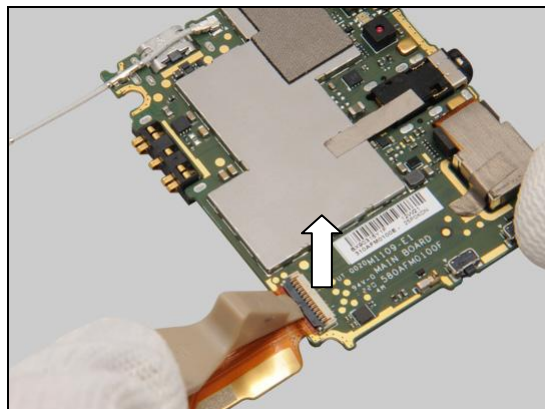
Gently peel off the Tape ZIF Connector by using a Flex Film Assembly Tool.

Scrap! Not to be reused!



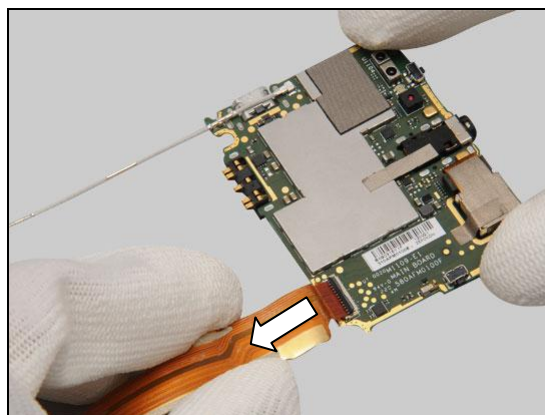
Disassembly

Unlock the ZIF connector.



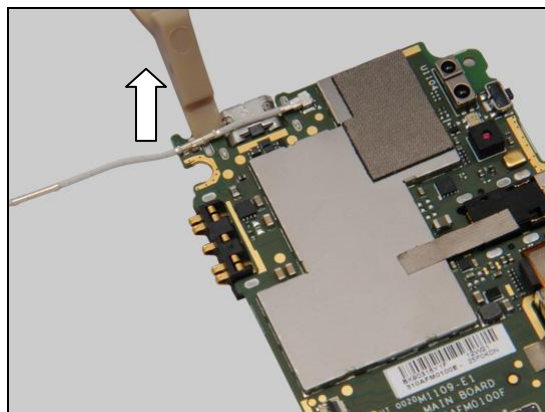
Remove the FPC Link.

Scrap! Not to be reused!

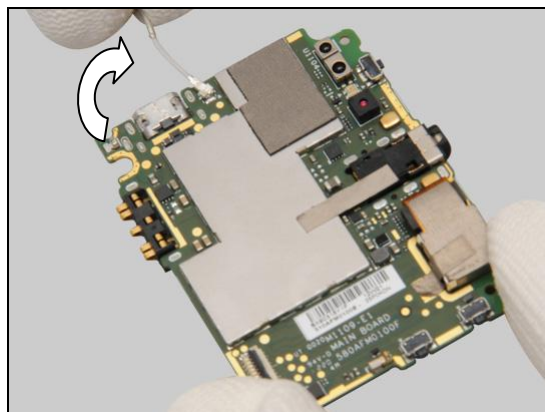


3.8 RF Cable & Main PBA

Insert a Front Opening Tool as shown and gently pull upwards to release the RF Cable from the hook.

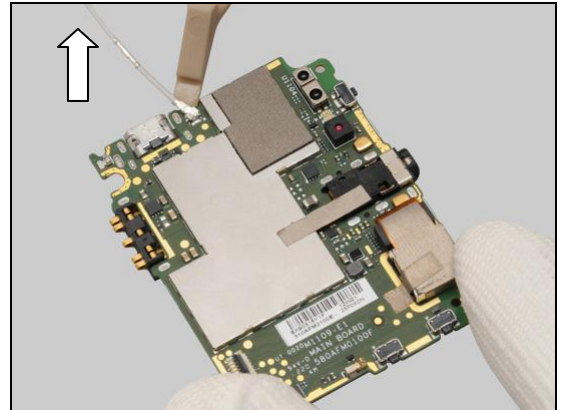


Turn the RF Cable at approximate 90 degree as shown.

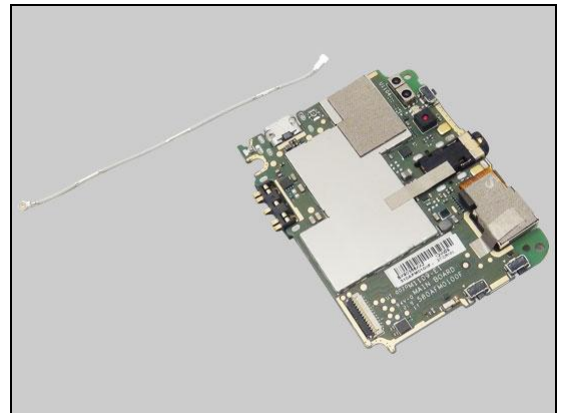


Disassembly

Disconnect this end of the RF Cable.



Separate the RF Cable and the Main PBA.



4 Replacement

4.1 Cover Battery Assy

Follow the 3.1 Disassembly instructions!

Prepare a new Cover Battery Assy.

Follow the 5.8 Reassembly instructions!



Replacement

4.2 Core Unit Label

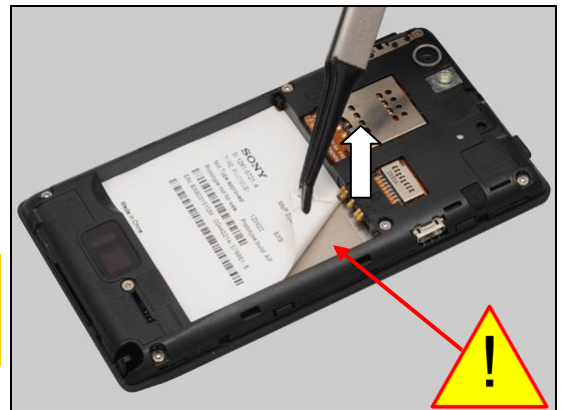
Follow the 3.1 – 3.2 Disassembly instructions!
 Carry out the Removal as described below.
 Prepare a new Core Unit Label.
 Carry out the Installation as described below.
Follow the 5.7 – 5.8 Reassembly instructions!

REMOVAL

Read the old Label Mobile Phone and write the information into the 'Label Print Solution' program.
 Carefully peel off to remove the Core Unit Label.

Scrap! Not to be reused!

Be careful! Do not damage the tape and the FPC Link under the Core Unit Label!



INSTALLATION

Check that the proper label format is loaded in the Zebra printer and write a new Label by using the 'Label Print Solution' software.

One label only is allowed!



Press along the surface of the Core Unit Label to make it securely attached as shown.

Replacement

4.3 Key Power

Follow the 3.1 – 3.2 Disassembly instructions!

Carry out the Removal as described below.

Prepare a new Key Power.

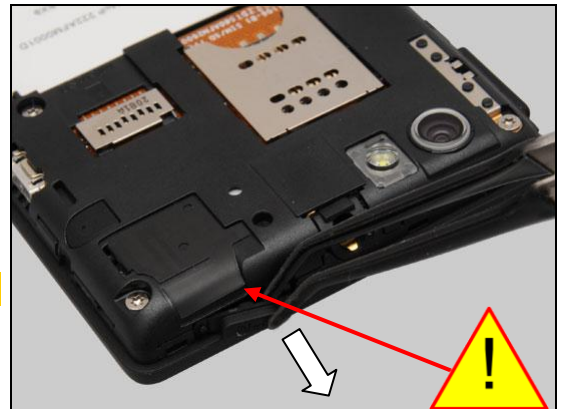
Carry out the Installation as described below.

Follow the 5.7 – 5.8 Reassembly instructions!

REMOVAL

Gently remove the Key Power by using a Flex Film Assembly Tool.

Be careful! Do not damage the Rear Cover Assy!



INSTALLATION

Place a new Key Power on its proper position.

Note the orientation of the Key Power to be installed!

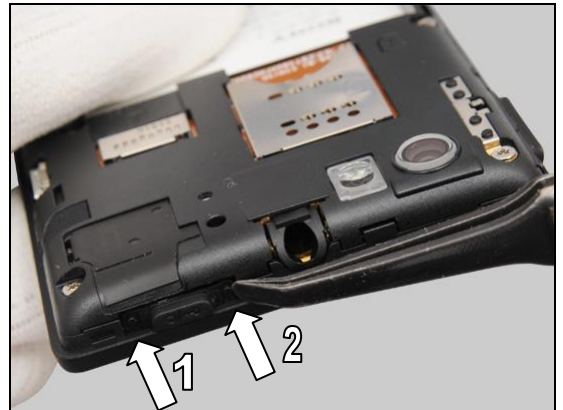


Press to secure its position.



Replacement: Key Power

Press these two sides to insert the pegs into the holes.



Replacement

4.4 Key Volume

Follow the 3.1 – 3.2 Disassembly instructions!

Carry out the Removal as described below.

Prepare a new Key Volume.

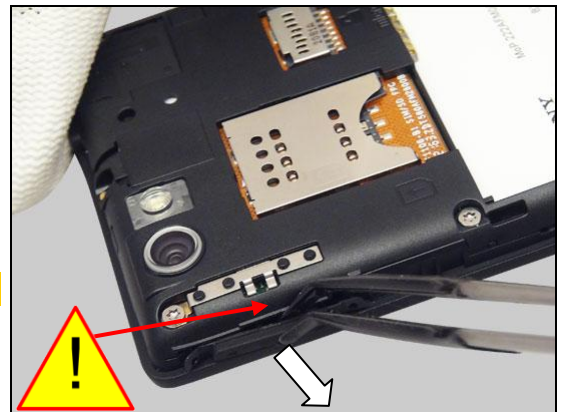
Carry out the Installation as described below.

Follow the 5.7 – 5.8 Reassembly instructions!

REMOVAL

Remove the Key Volume by using a Flex Film Assembly Tool.

Be careful! Do not damage the Rear Cover Assy!



INSTALLATION

Place a new Key Volume on its proper position.

Note the orientation of the Key Volume to be installed!

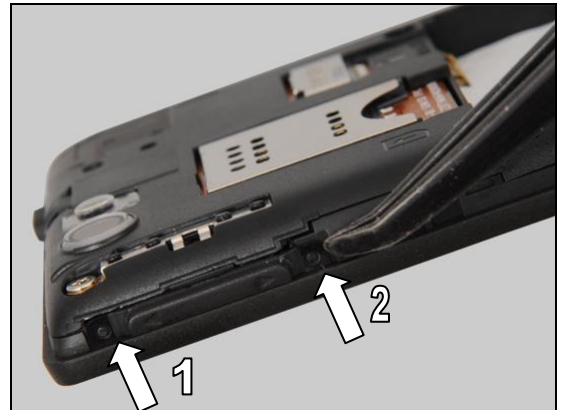


Press to snap the hooks.



Replacement: Key Volume

Press these two sides to insert the pegs into the holes.



Replacement

4.5 Rear Cover Assy

Follow the 3.1 – 3.3 Disassembly instructions!

Follow the 4.6, 4.7 and 4.9 Removal instructions!

Prepare a new Rear Cover Assy.

Follow the 4.6, 4.7, 4.8 and 4.9 Installation instructions!

Follow the 5.5 – 5.8 Reassembly instructions!



Replacement

4.6 Speaker & Adhesive Speaker

Follow the 3.1 – 3.3 Disassembly instructions!

Carry out the Removal as described below.

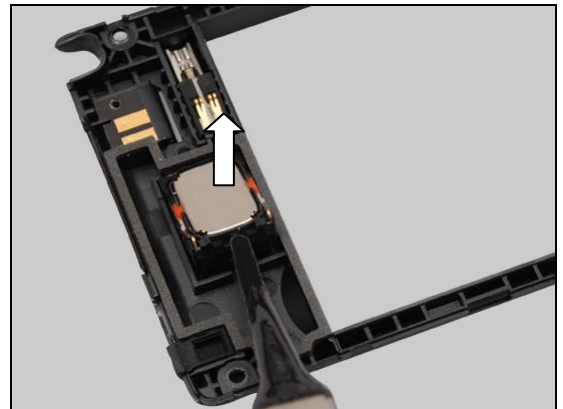
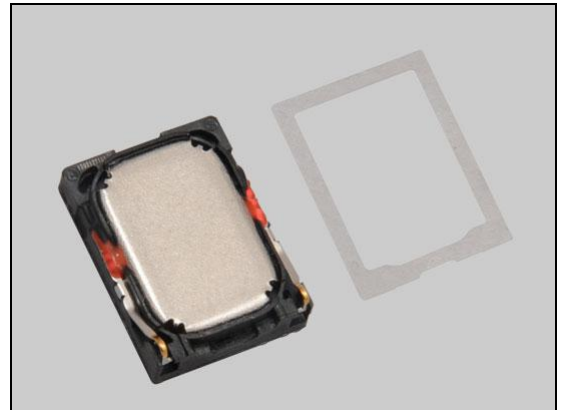
Prepare a new Speaker and a new Adhesive Speaker.

Carry out the Installation as described below.

Follow the 5.5 – 5.8 Reassembly instructions!

REMOVAL

Detach to remove the Speaker from the cavity by using a Flex Film Assembly Tool.



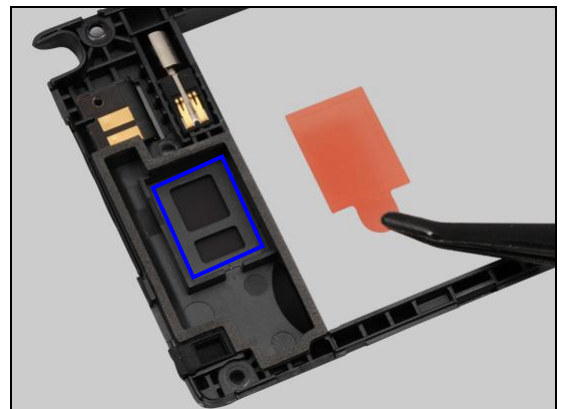
Detach to remove the Adhesive Speaker.

Scrap! Not to be reused!



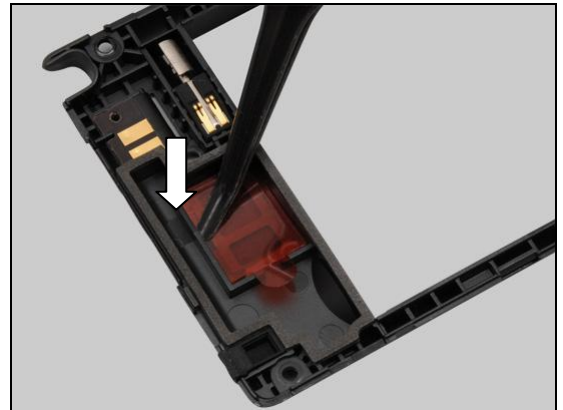
INSTALLATION

Place a new Adhesive Speaker in the cavity.

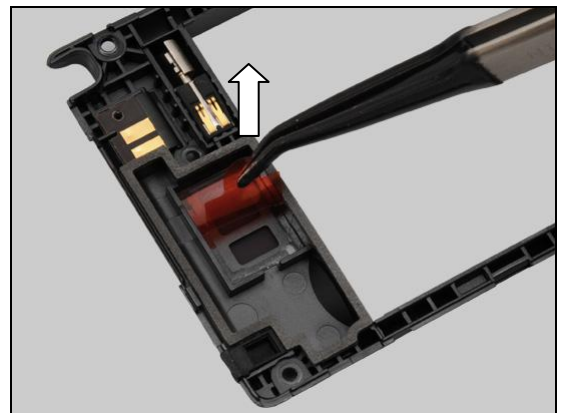


Replacement: Speaker & Adhesive Speaker

Press to secure its attachment.

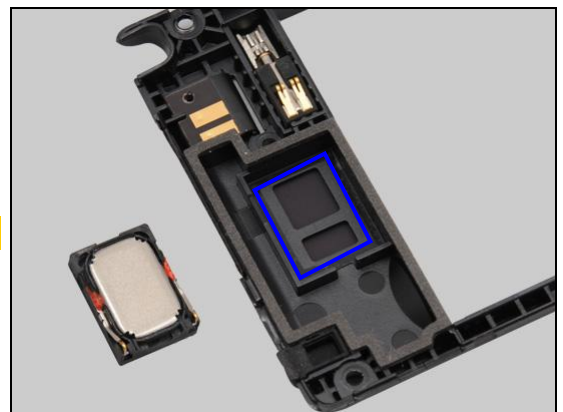


Peel off the protective film.



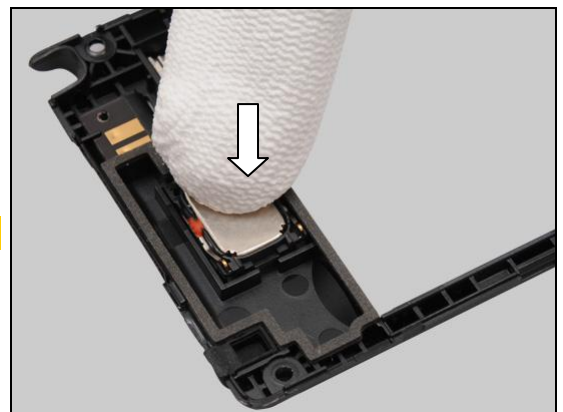
Place the Speaker in the cavity.

Note the orientation of the Speaker to be installed!



Press to secure its attachment and position.

Be careful! Do not touch the contact pins!



Replacement

4.7 Rubber Mic

Follow the 3.1 – 3.3 Disassembly instructions!

Carry out the Removal as described below.

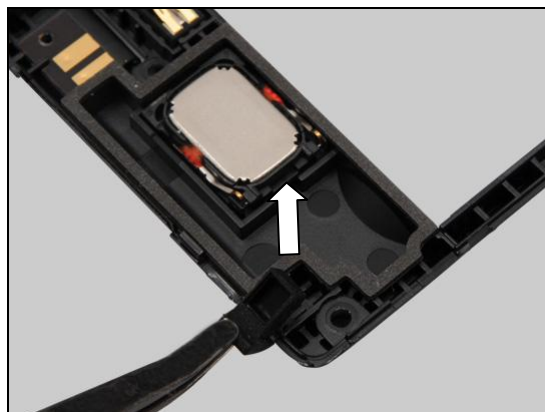
Prepare a new Rubber Mic.

Carry out the Installation as described below.

Follow the 5.5 – 5.8 Reassembly instructions!

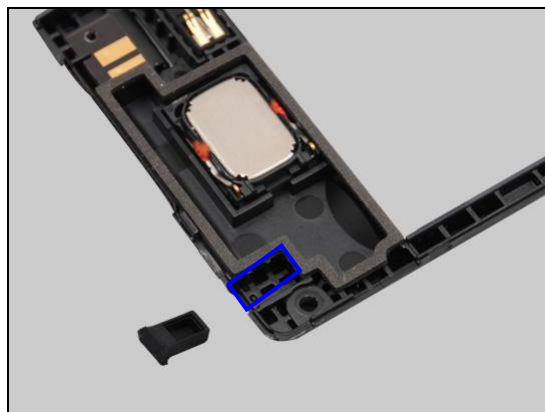
REMOVAL

Gently pull upwards to remove the Rubber Mic as shown.

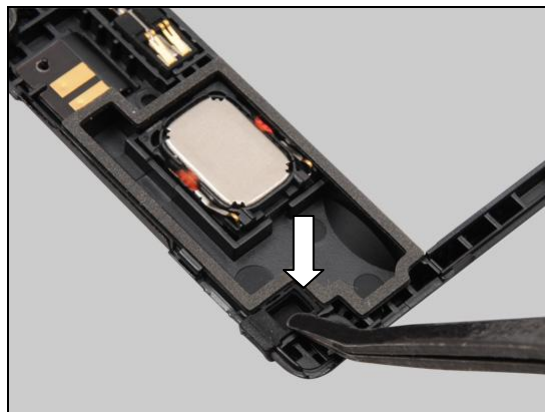


INSTALLATION

Place a new Rubber Mic into its socket.



Press to secure its position.



Replacement

4.8 Rubber Cap

Follow the 3.1 – 3.2 Disassembly instructions!

Carry out the Removal as described below.

Prepare a new Rubber Cap.

Carry out the Installation as described below.

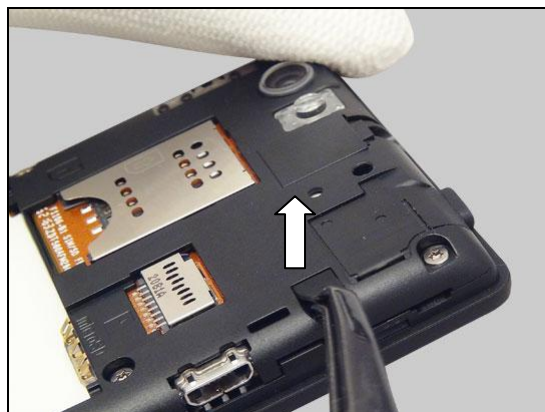
Follow the 5.5 – 5.8 Reassembly instructions!

REMOVAL

Detach to remove the Rubber Cap by using a Flex Film Assembly Tool.

Be careful! Do not damage the RF connector under the Rubber Cap!

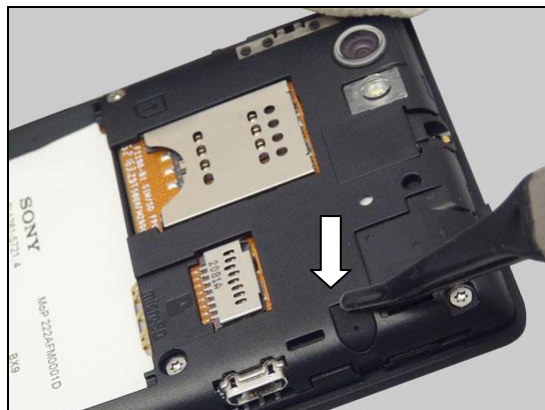
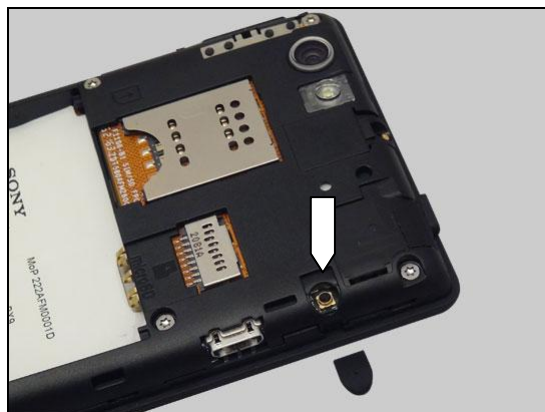
Scrap! Not to be reused!



INSTALLATION

Place a new Rubber Cap on its proper position.

Press to secure its position.



Replacement

4.9 Vibrator

Follow the 3.1 – 3.3 Disassembly instructions!

Carry out the Removal as described below.

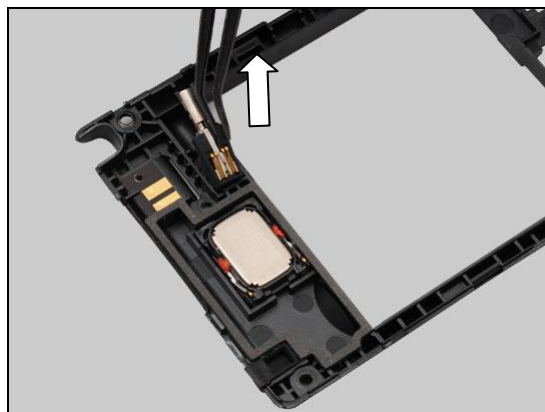
Prepare a new Vibrator.

Carry out the Installation as described below.

Follow the 5.5 – 5.8 Reassembly instructions!

REMOVAL

Gently pull upwards to remove the Vibrator as shown.



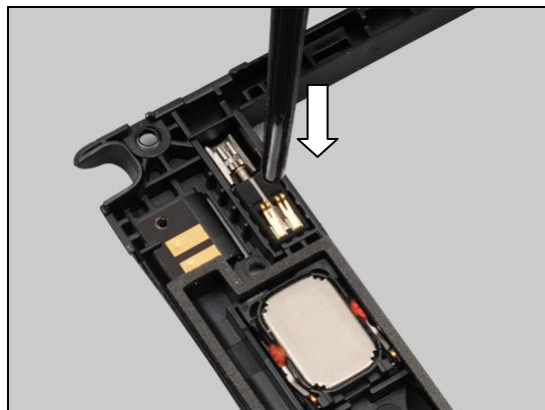
INSTALLATION

Place a new Vibrator into its socket.



Press to secure its position.

Be careful! Do not touch the contact pins!



Replacement

4.10 Deco & Adhesive Deco

Follow the 3.1 – 3.3 Disassembly instructions!

Carry out the Removal as described below.

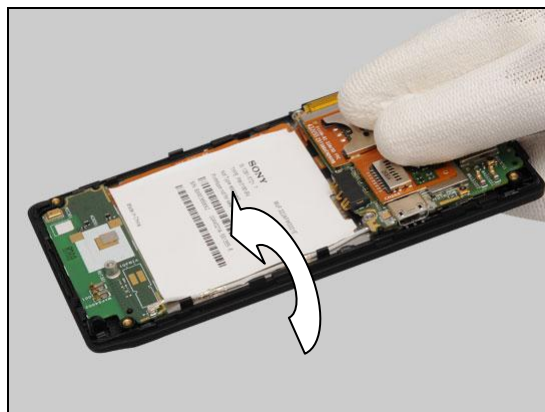
Prepare a new Deco and a new Adhesive Deco.

Carry out the Installation as described below.

Follow the 5.5 – 5.8 Reassembly instructions!

REMOVAL

Gently press the Main PBA with fingers to secure its position and turn over the unit as shown.



Push against the back side of the Deco to make a gap between the Deco and the Front Cover Assy by using a Nylon Pointer.



Insert a Guitar Pick as shown and gently slide along to release the Deco.



Replacement: Deco & Adhesive Deco

Lift up to remove the Deco with fingers.



Detach to remove the Adhesive Deco.

Scrap! Not to be reused!



INSTALLATION

Place a new Adhesive Deco on the proper position as shown.



Press along to secure its attachment and position.



Replacement: Deco & Adhesive Deco

Peel off the protective film.



Place the Deco on its correct position.



Press along to secure its attachment and position.



Replacement

4.11 Gasket Speaker

Follow the 3.1 – 3.3 Disassembly instructions!

Carry out the Removal as described below.

Prepare a new Gasket Speaker.

Carry out the Installation as described below.

Follow the 5.5 – 5.8 Reassembly instructions!

REMOVAL

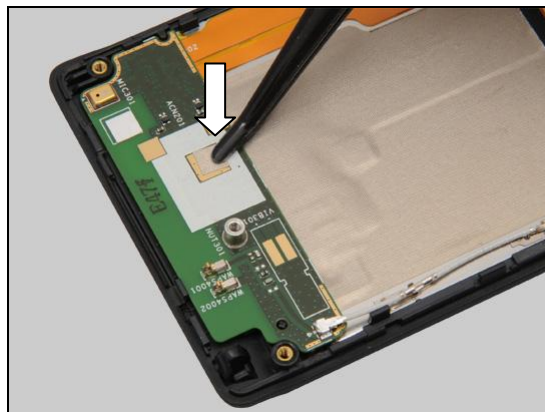
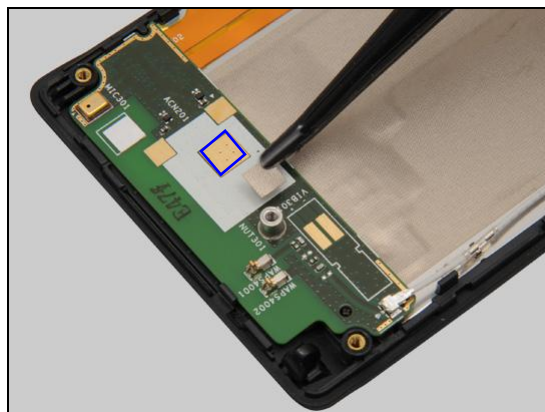
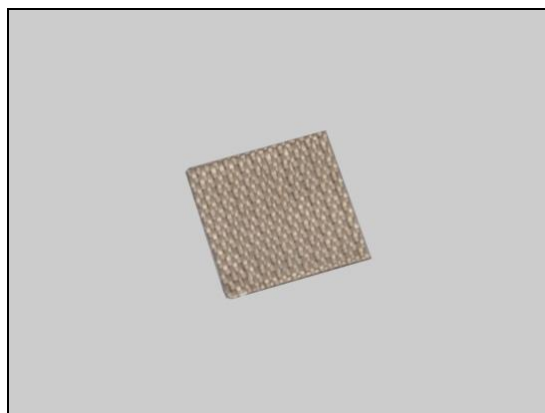
Detach to remove the Gasket Speaker as shown.

Scrap! Not to be reused!

INSTALLATION

Place a new Gasket Speaker on its proper position as indicated by the golden area.

Press to secure its position and attachment.



Replacement

4.12 Water Indicator

Follow the 3.1 – 3.3 Disassembly instructions!

Carry out the Removal as described below.

Prepare a new Water Indicator.

Carry out the Installation as described below.

Follow the 5.5 – 5.8 Reassembly instructions!

There are two Water Indicators as shown in picture.

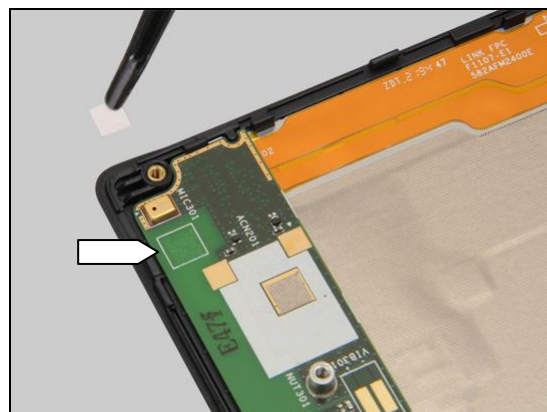
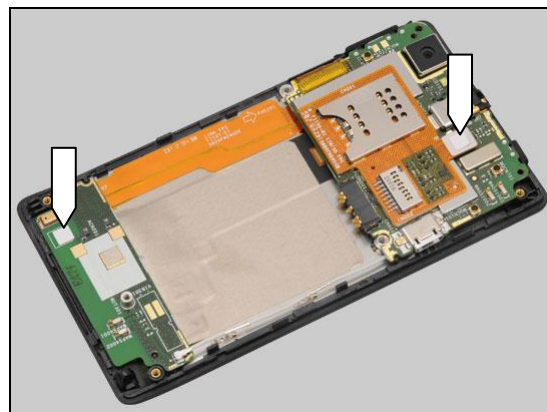
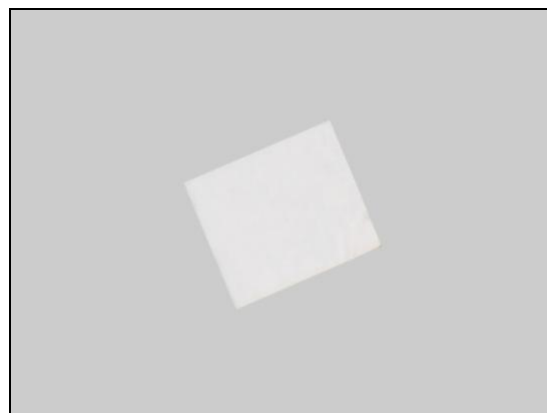
REMOVAL

Gently detach to remove the Water Indicator by using a Flex Film Assembly Tool.

Scrap! Not to be reused!

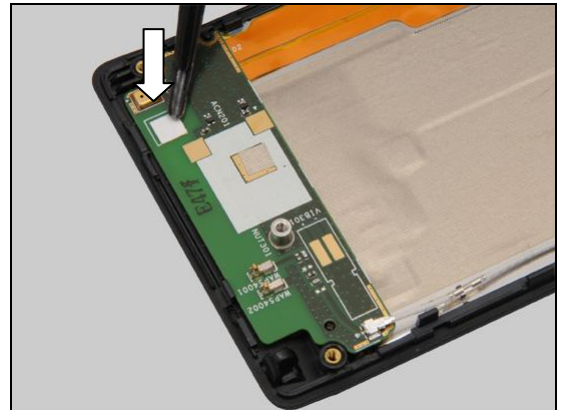
INSTALLATION

Place a new Water Indicator on the proper position as indicated by the guiding rectangle.

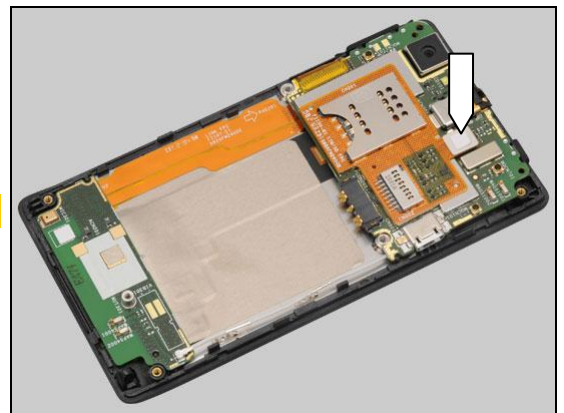


Replacement: Water Indicator

Press to secure its position and attachment.



Do the same to the other if need!



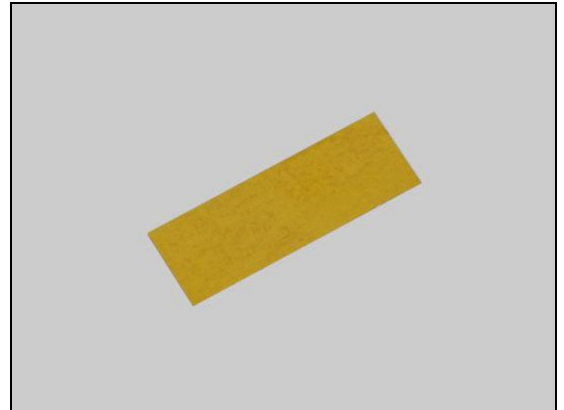
Replacement

4.13 Tape Connector (on Sub Board Assy)

Follow the 3.1 – 3.5 Disassembly instructions!

Prepare a new Tape Connector.

Follow the 5.4 – 5.8 Reassembly instructions!



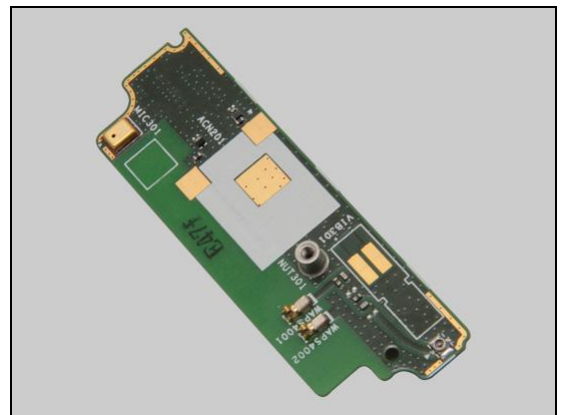
4.14 Sub Board Assy

Follow the 3.1 – 3.5 Disassembly instructions!

Prepare a new Sub Board Assy.

Follow the 4.11 and 4.12 Installation instructions!

Follow the 5.4 – 5.8 Reassembly instructions!

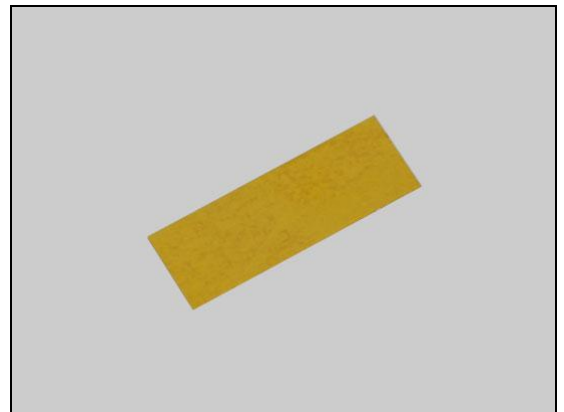


4.15 Tape Connector (on Main PBA)

Follow the 3.1 – 3.6 Disassembly instructions!

Prepare a new Tape Connector.

Follow the 5.3 – 5.8 Reassembly instructions!



4.16 Cover Front Assy

Follow the 3.1 – 3.6 Disassembly instructions!

Follow the 4.17 and 4.18 Removal instructions!

Prepare a new Cover Front Assy.

Follow the 4.10, 4.17 and 4.18 Installation instructions!

Follow the 5.3 – 5.8 Reassembly instructions!

Touch Panel calibration has to be performed for all replaced units; 1270-6729 Trouble Shooting Application



Replacement

4.17 Receiver & Adhesive Receiver

Follow the 3.1 – 3.6 Disassembly instructions!

Carry out the Removal as described below.

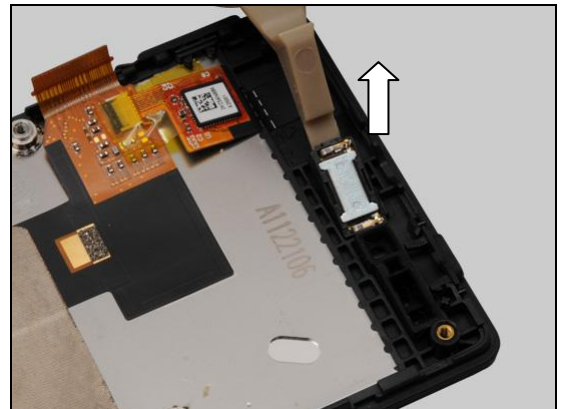
Prepare a new Receiver and a new Adhesive Receiver.

Carry out the Installation as described below.

Follow the 5.3 – 5.8 Reassembly instructions!

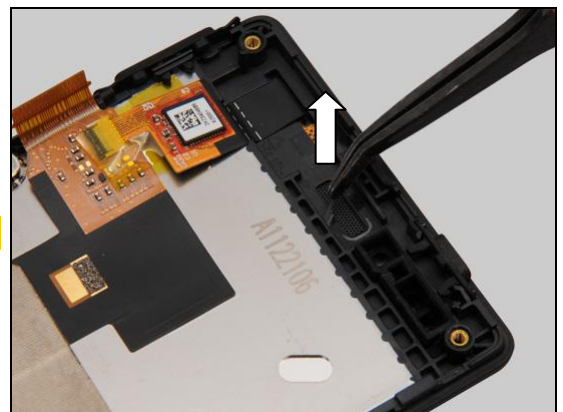
REMOVAL

Detach to remove the Receiver from the cavity by using a Front Opening Tool.



Detach to remove the Adhesive Receiver.

Scrap! Not to be reused!



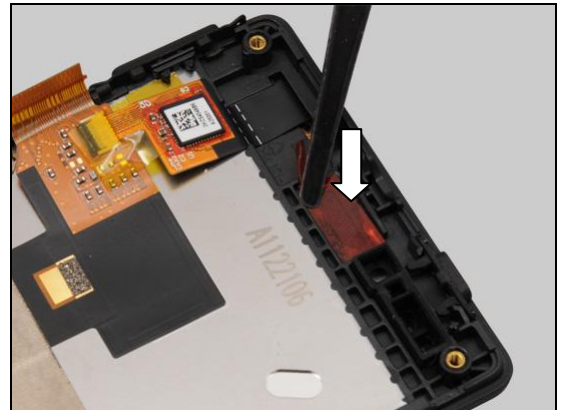
INSTALLATION

Place a new Adhesive Receiver in the cavity.

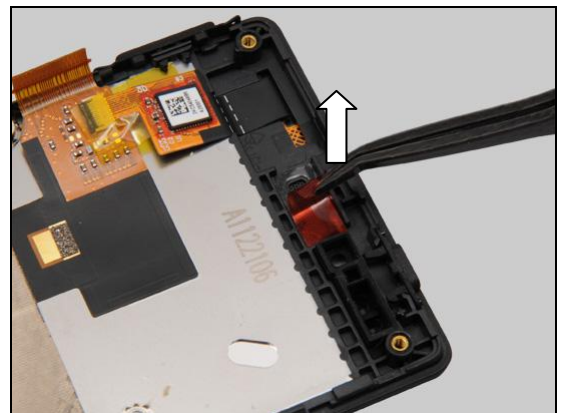


Replacement: Receiver & Adhesive Receiver

Press to secure its attachment.



Peel off the protective film.



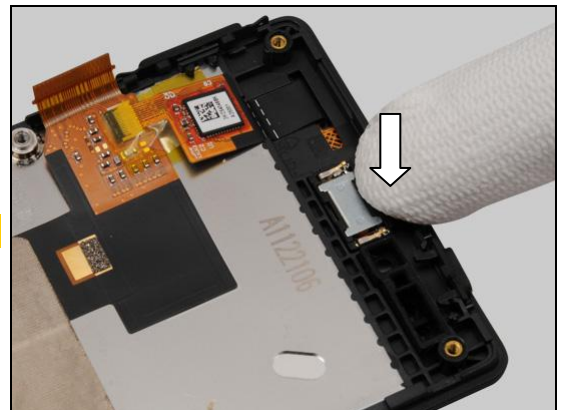
Place the Receiver in the cavity.

Note the orientation of the Receiver to be installed!



Press to secure its attachment and position.

Be careful! Do not touch the contact pins!



Replacement

4.18 Rubber Proximity Sensor

Follow the 3.1 – 3.6 Disassembly instructions!

Carry out the Removal as described below.

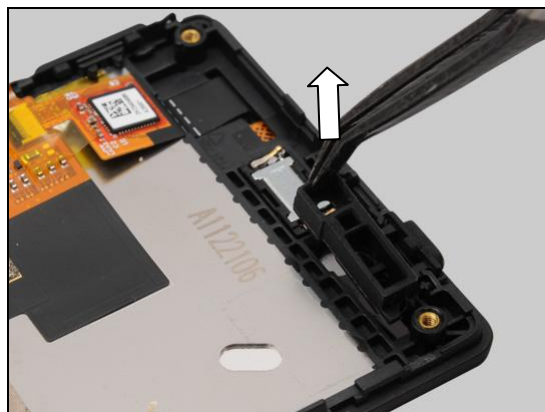
Prepare a new Rubber Proximity Sensor.

Carry out the Installation as described below.

Follow the 5.3 – 5.8 Reassembly instructions!

REMOVAL

Gently pull upwards to remove the Rubber Proximity Sensor as shown.

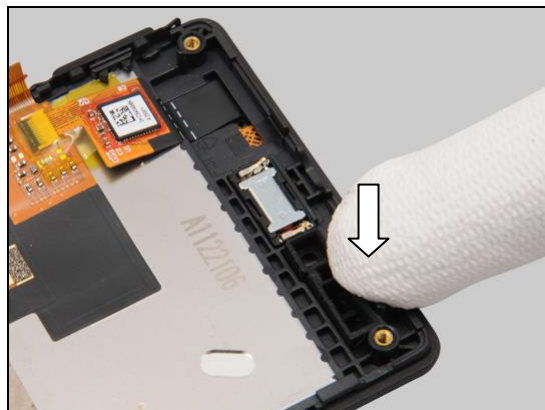


INSTALLATION

Place a new Rubber Proximity Sensor into its socket.



Press to secure its position.



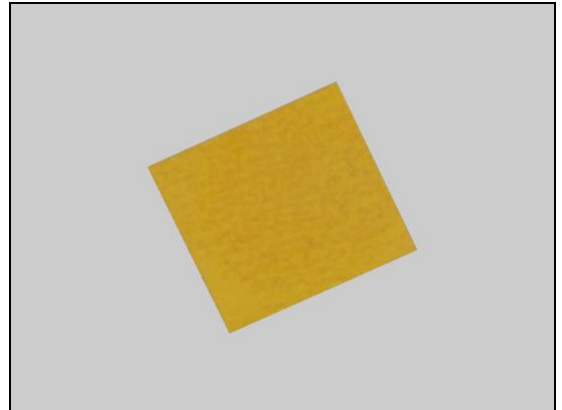
Replacement

4.19 Tape ZIF Connector

Follow the 3.1 – 3.7 Disassembly instructions!

Prepare a new Tape ZIF Connector.

Follow the 5.2 – 5.8 Reassembly instructions!

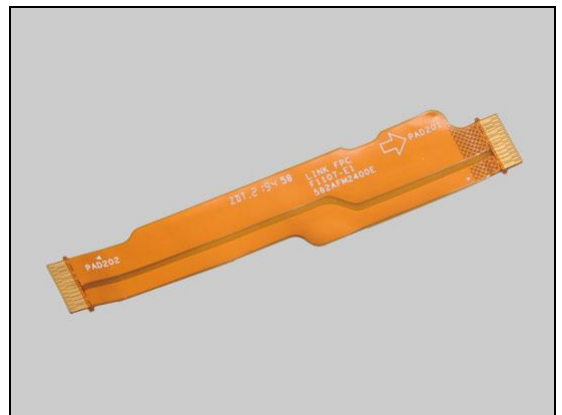


4.20 FPC Link

Follow the 3.1 – 3.7 Disassembly instructions!

Prepare a new FPC Link.

Follow the 5.2 – 5.8 Reassembly instructions!



4.21 RF Cable

Follow the 3.1 – 3.8 Disassembly instructions!

Prepare a new RF Cable.

Follow the 5.1 – 5.8 Reassembly instructions!



Replacement

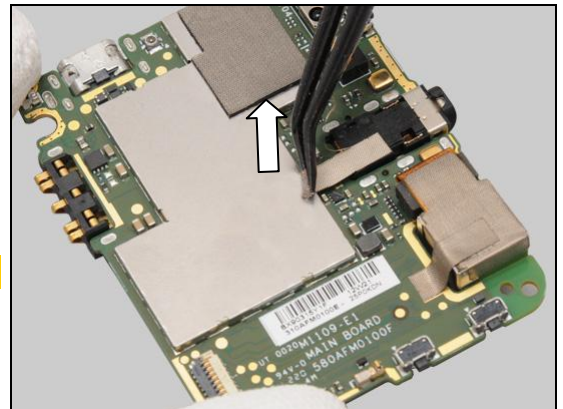
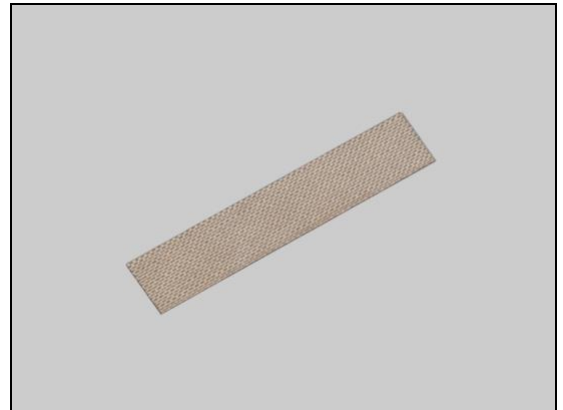
4.22 Conductive Tape Receiver

Follow the 3.1 – 3.8 Disassembly instructions!
Carry out the Removal as described below.
Prepare a new Conductive Tape Receiver.
Carry out the Installation as described below.
Follow the 5.1 – 5.8 Reassembly instructions!

REMOVAL

Detach to remove the Conductive Tape Receiver as shown.

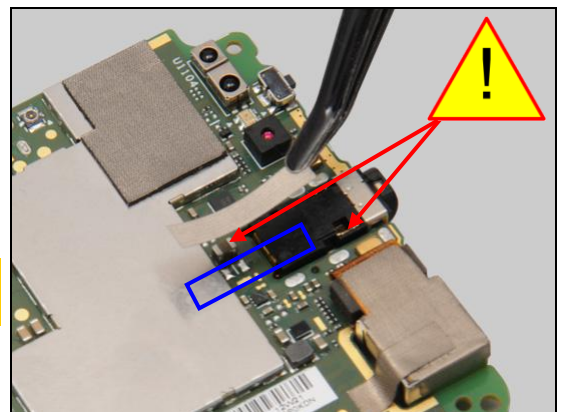
Scrap! Not to be reused!



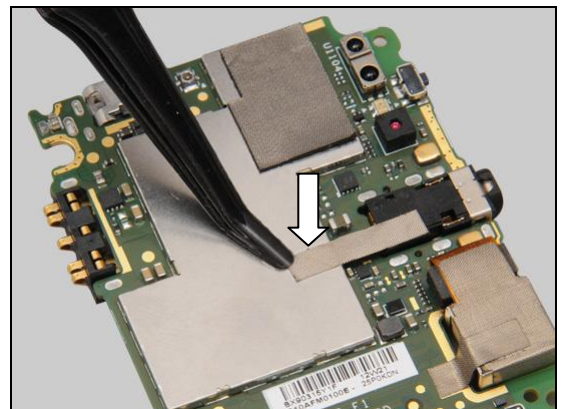
INSTALLATION

Place a new Conductive Tape Receiver on its proper position.

Be careful! Do not cover the component and the metal pin of the Audio Jack!



Press along to secure its position and attachment.



Replacement

4.23 Gasket Main Board

Follow the 3.1 – 3.8 Disassembly instructions!

Carry out the Removal as described below.

Prepare a new Gasket Main Board.

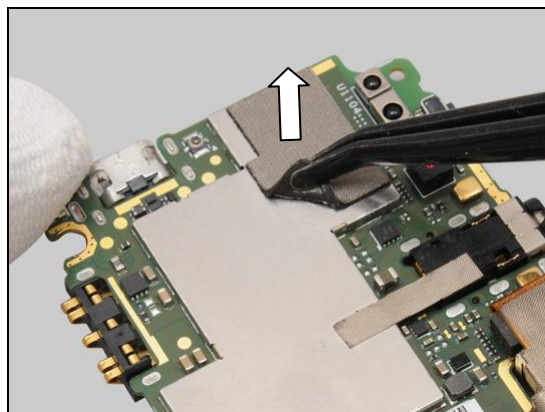
Carry out the Installation as described below.

Follow the 5.1 – 5.8 Reassembly instructions!

REMOVAL

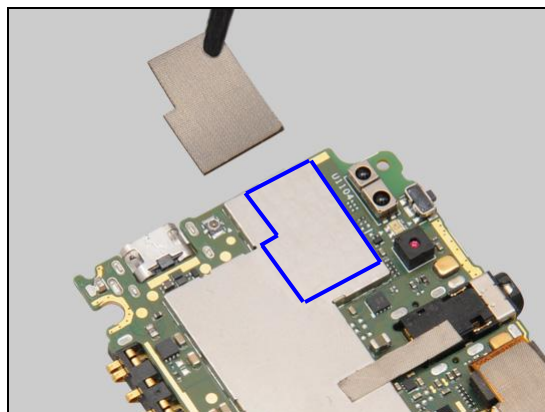
Detach to remove the Gasket Main Board as shown.

Scrap! Not to be reused!

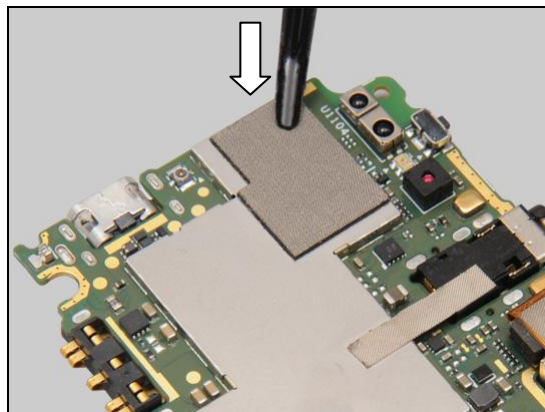


INSTALLATION

Place a new Gasket Main Board as indicated by the blue line.



Press to secure its position and attachment.



Replacement

4.24 FPC SIM SD

Follow the 3.1 – 3.8 Disassembly instructions!

Carry out the Removal as described below.

Prepare a new FPC SIM SD.

Carry out the Installation as described below.

Follow the 4.12 Installation instructions!

Follow the 5.1 – 5.8 Reassembly instructions!

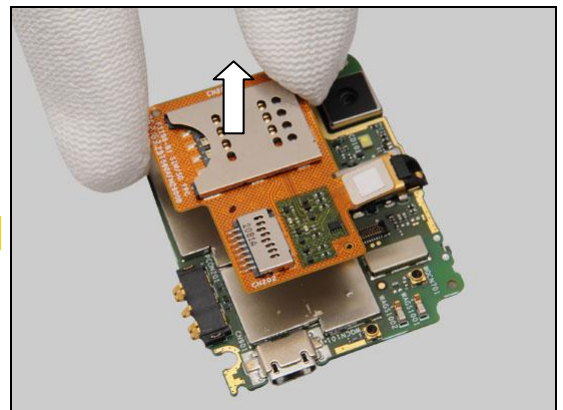
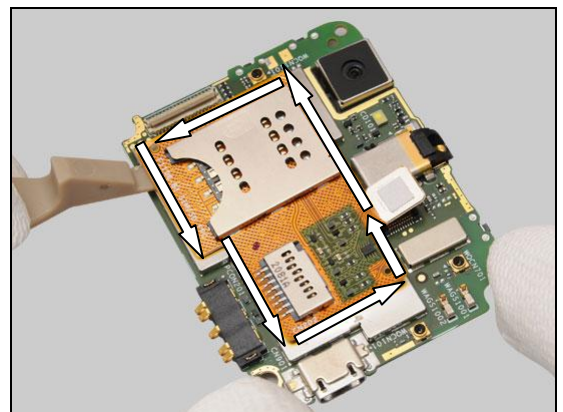
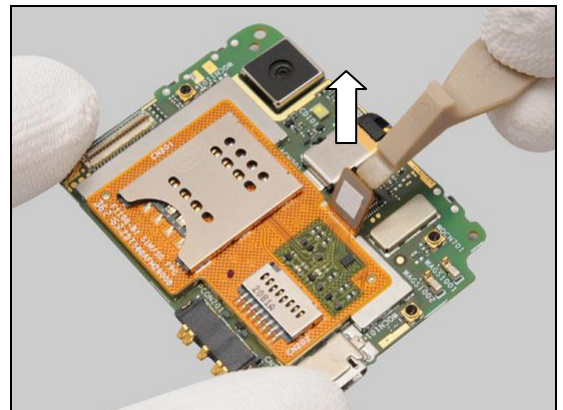
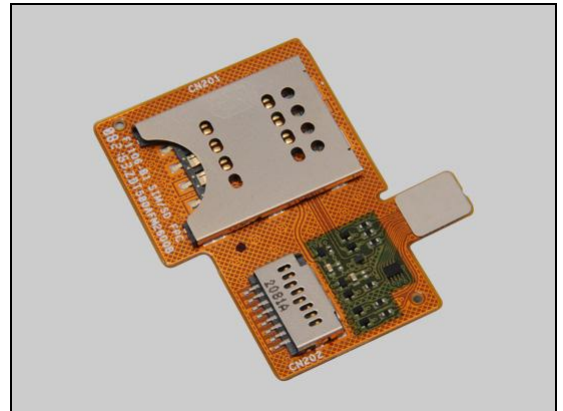
REMOVAL

Disconnect the BtB connector by using a Front Opening Tool.

Gently slide along to release it.

Remove it with fingers.

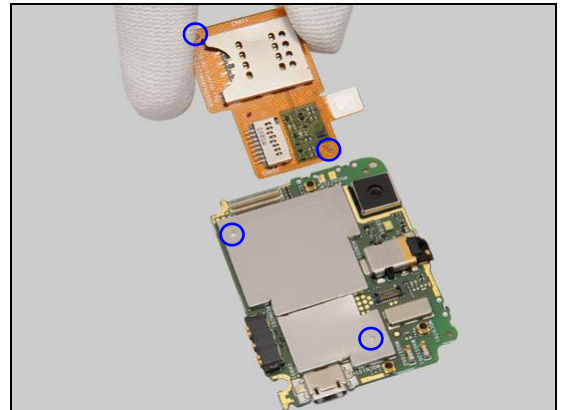
Scrap! Not to be reused!



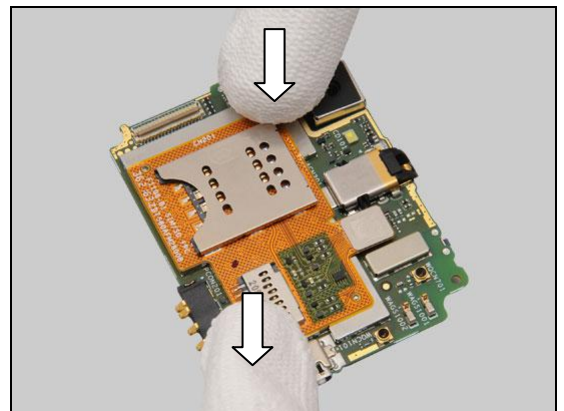
Replacement: FPC SIM SD

INSTALLATION

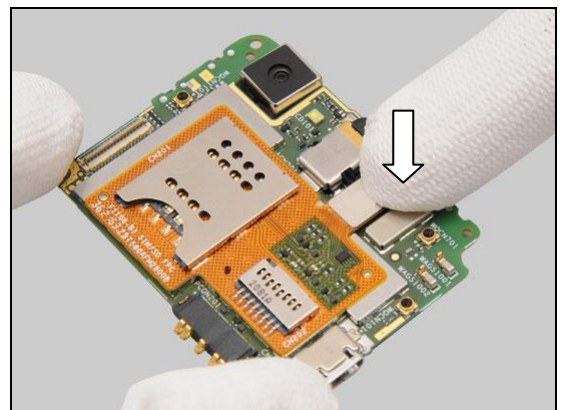
Place a new FPC SIM SD on its proper position as indicated by the pegs and holes.



Press to secure its attachment and position.



Press to connect the BtB connector.



Replacement

4.25 Shielding Cover PWR

Follow the 3.1 – 3.8 Disassembly instructions!

Follow the 4.22 Removal instructions!

Carry out the Removal as described below.

Prepare a new Shielding Cover PWR.

Carry out the Installation as described below.

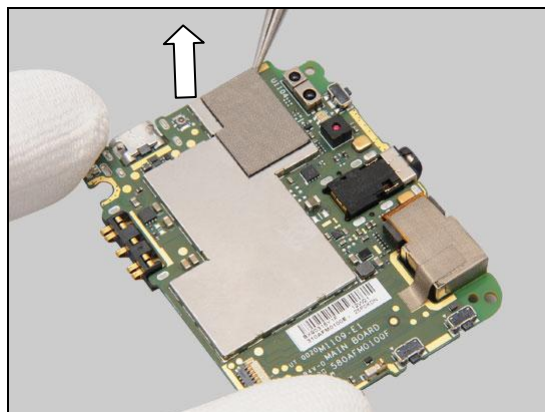
Follow the 4.23 and 4.22 Installation instructions!

Follow the 5.1 – 5.8 Reassembly instructions!

REMOVAL

Unsnap the corners of the Shielding Cover PWR by using a pair of Tweezers and pull upwards to remove it.

Scrap! Not to be reused!

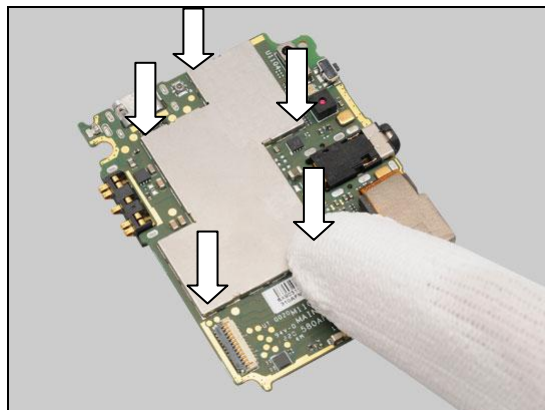
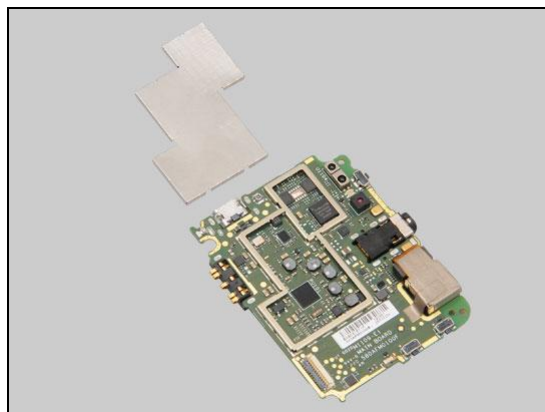


INSTALLATION

Prepare a new Shielding Cover PWR.

Press to snap it.

Only the edge of the Shielding Cover is allowed to press.



Replacement

4.26 Shielding Cover BB

Follow the 3.1 – 3.8 Disassembly instructions!

Follow the 4.24 Removal instructions!

Carry out the Removal as described below.

Prepare a new Shielding Cover BB.

Carry out the Installation as described below.

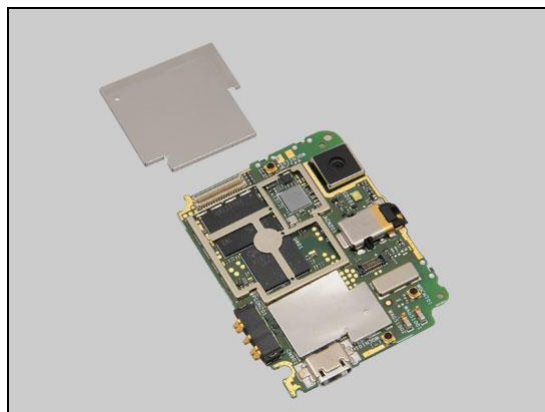
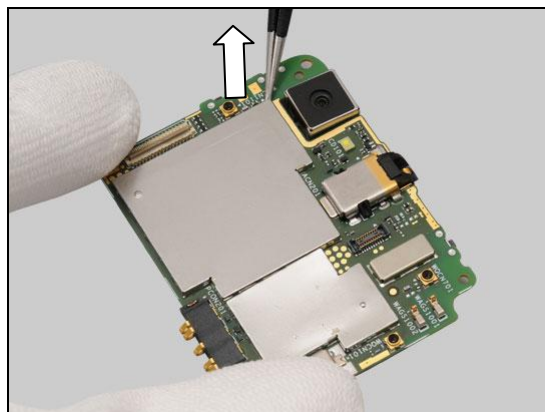
Follow the 4.24 and 4.12 Installation instructions!

Follow the 5.1 – 5.8 Reassembly instructions!

REMOVAL

Unsnap the corners of the Shielding Cover BB by using a pair of Tweezers and pull upwards to remove it.

Scrap! Not to be reused!

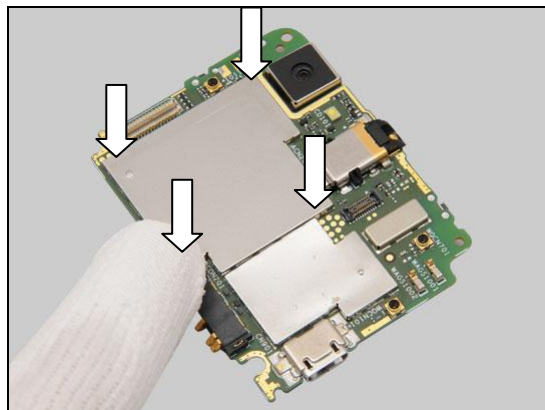


INSTALLATION

Prepare a new Shielding Cover BB.

Press to snap it.

Only the edge of the Shielding Cover is allowed to press.



Replacement

4.27 Shielding Cover RF

Follow the 3.1 – 3.8 Disassembly instructions!

Follow the 4.24 Removal instructions!

Carry out the Removal as described below.

Prepare a new Shielding Cover RF.

Carry out the Installation as described below.

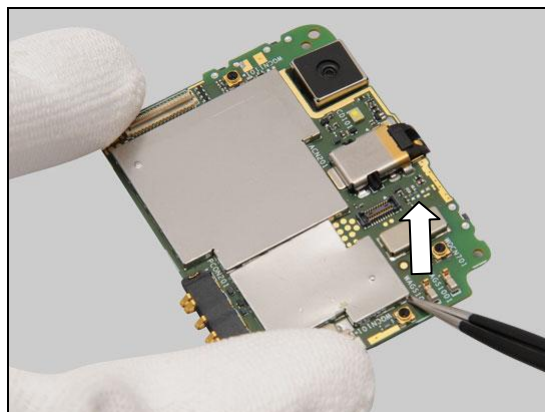
Follow the 4.24 and 4.12 Installation instructions!

Follow the 5.1 – 5.8 Reassembly instructions!

REMOVAL

Unsnap the corners of the Shielding Cover RF by using a pair of Tweezers and pull upwards to remove it.

Scrap! Not to be reused!

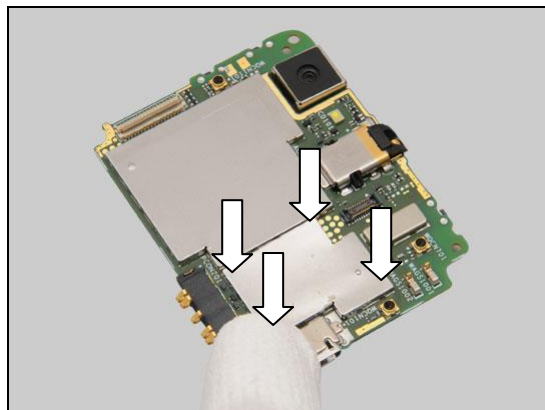
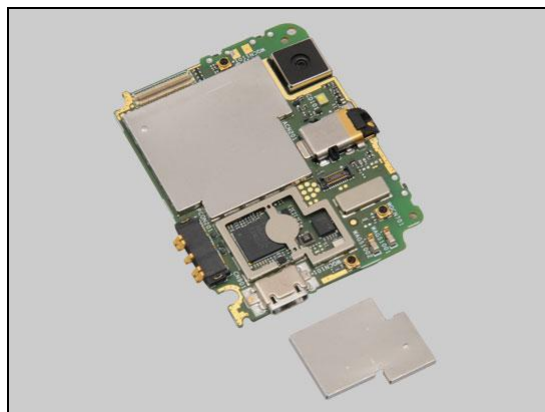


INSTALLATION

Prepare a new Shielding Cover RF.

Press to snap it.

Only the edge of the Shielding Cover is allowed to press.



Replacement

4.28 Conductive Tape Camera

Follow the 3.1 – 3.8 Disassembly instructions!

Carry out the Removal as described below.

Prepare a new Conductive Tape Camera.

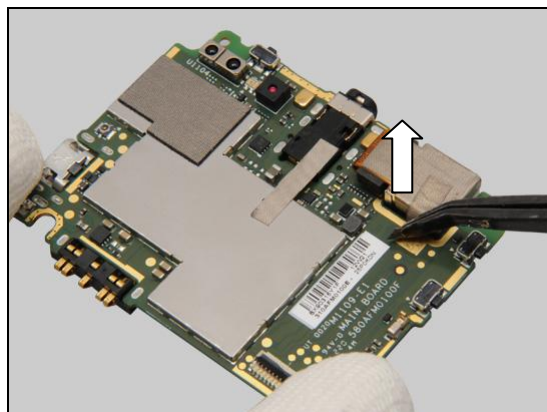
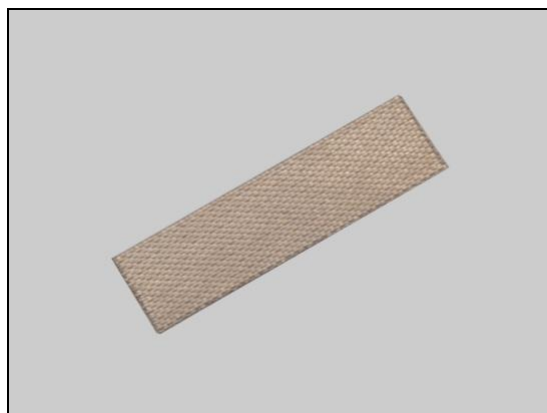
Carry out the Installation as described below.

Follow the 5.1 – 5.8 Reassembly instructions!

REMOVAL

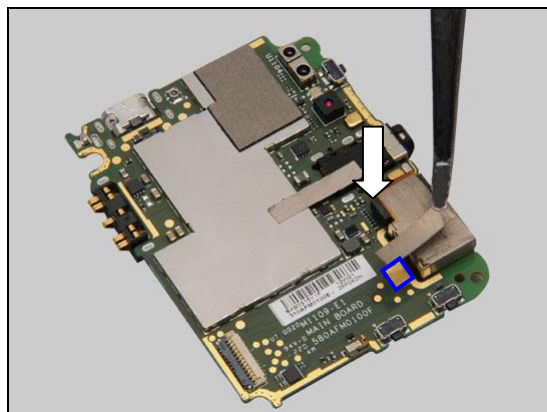
Gently peel off the Conductive Tape Camera by using a Flex Film Assembly Tool.

Scrap! Not to be reused!

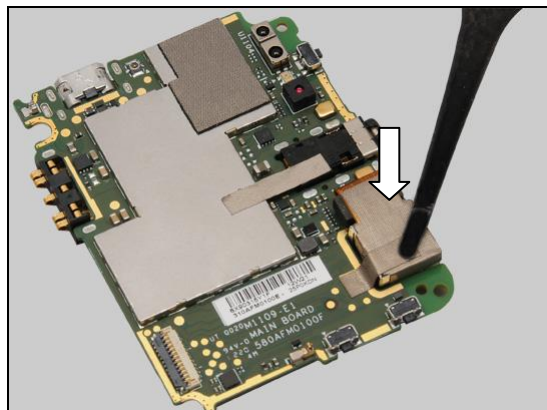


INSTALLATION

Attach a new Conductive Tape Camera on the correct position as indicated by the golden area.



Press along to secure its attachment and position as shown.



Replacement

4.29 Camera & Cushion Camera

Follow the 3.1 – 3.8 Disassembly instructions!

Follow the 4.28 Removal instructions!

Carry out the Removal as described below.

Prepare a new Camera and a new Cushion Camera.

Carry out the Installation as described below.

Follow the 4.28 Installation instructions!

Follow the 5.1 – 5.8 Reassembly instructions!

REMOVAL

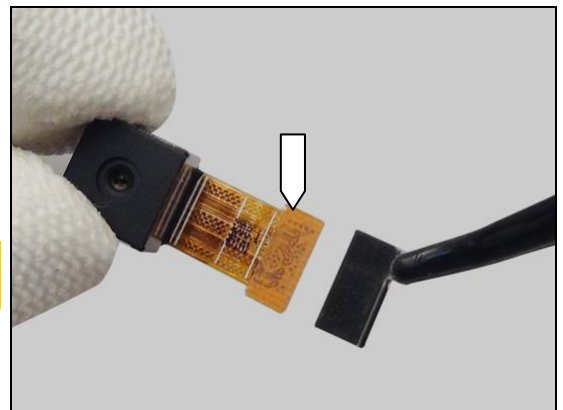
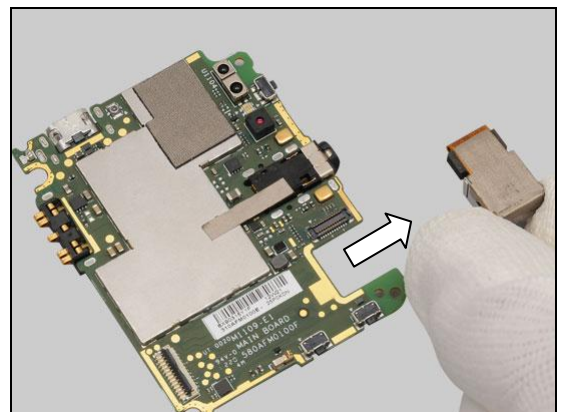
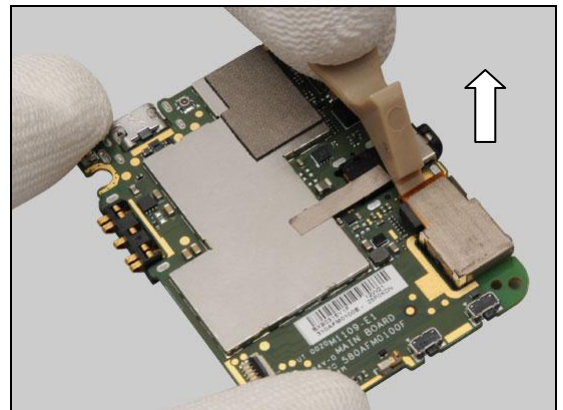
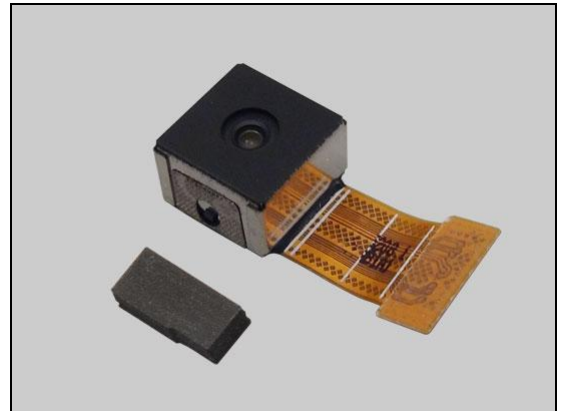
Disconnect the BtB connector of the Camera.

Remove the Camera.

INSTALLATION

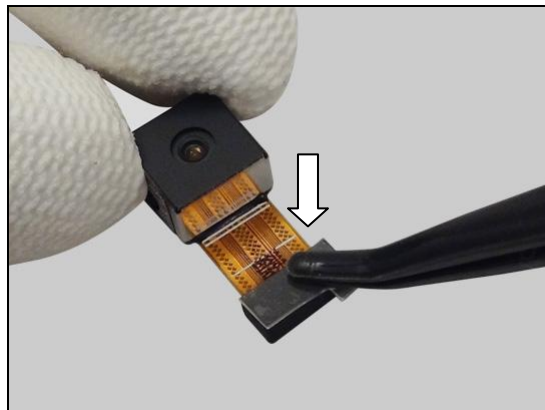
Place a new Cushion Camera on the Camera.

Note the orientation of the Cushion Camera to be installed!

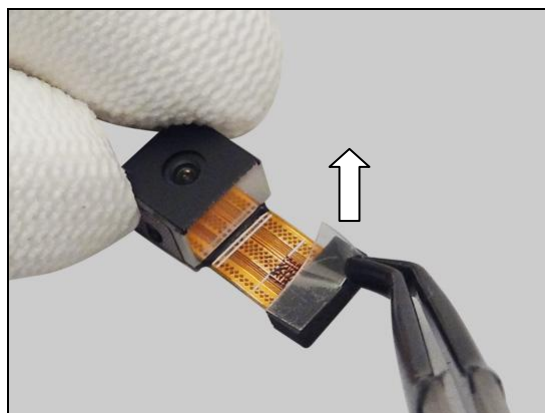


Replacement: Camera & Cushion Camera

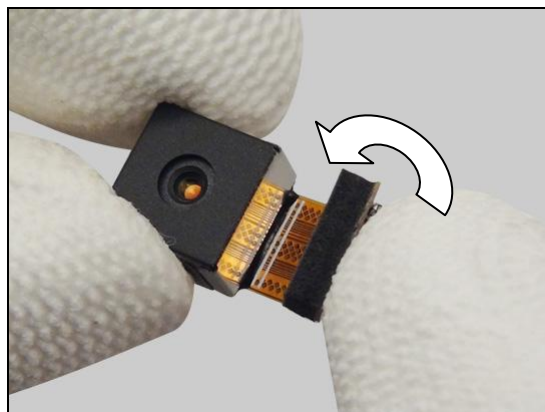
Press to secure its attachment.



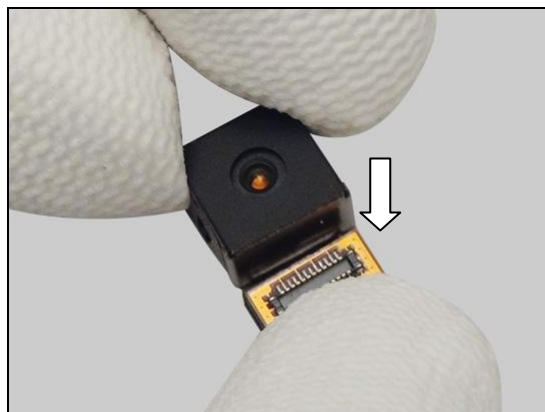
Peel off the protective film.



Gently push the FPC towards the camera head as shown in picture.

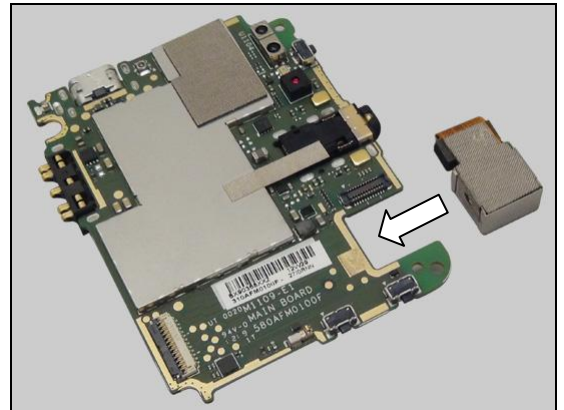


Press to secure its attachment and position.

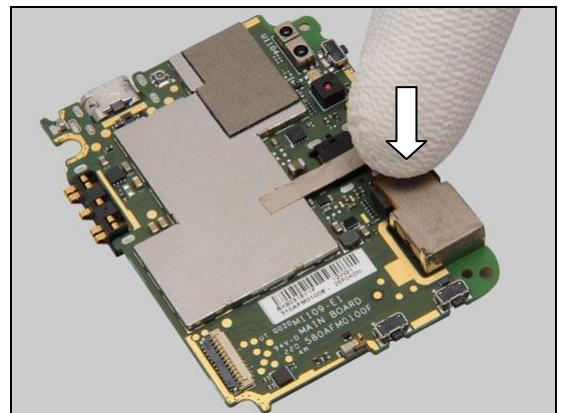


Replacement: Camera & Cushion Camera

Place a new Camera on the correct position.



Press to snap the BtB connector with finger.



Replacement

4.30 Board Swap - Replacement

Follow the 3.1 – 3.8 Disassembly instructions!

Follow the 4.28 and 4.29 Removal instructions!

Replace the Swap Board.

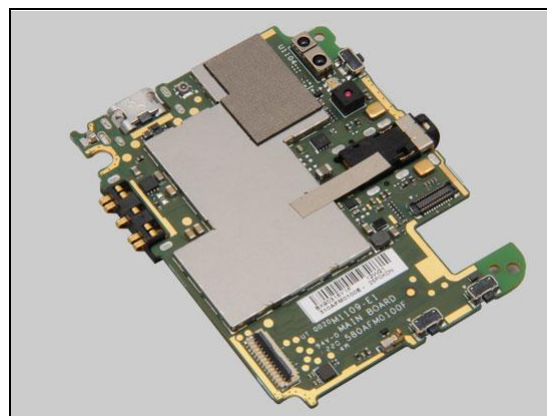
Reuse the Camera.

Follow the 4.29, 4.28, 4.24 and 4.11 Installation instructions!

Follow the 5.1 – 5.8 Reassembly instructions!

Startup the unit to initialize settings, before performs Customize Phone in Emma.

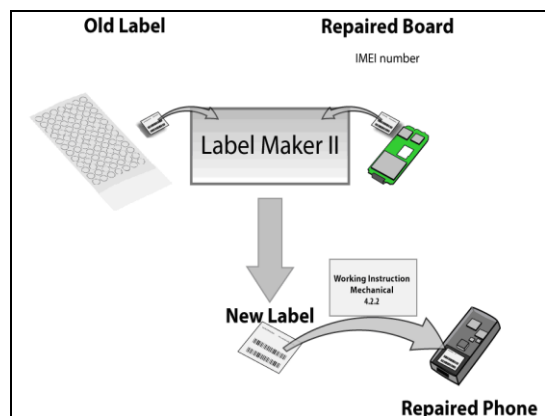
Touch Panel calibration has to be performed for all replaced units; 1270-6729 Trouble Shooting Application



4.31 Board Swap – Change Label

CHANGE LABEL

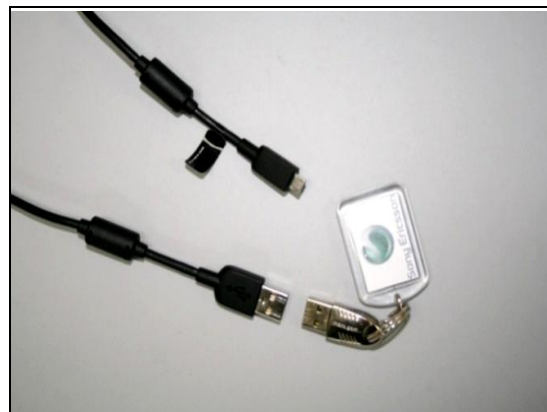
Follow the instructions in the Generic Repair Manual – Build swap for change of label.



4.32 Board Swap – Customize of Software

CUSTOMIZE OF SOFTWARE

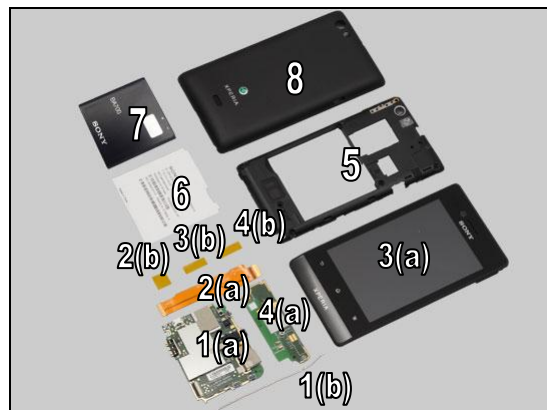
Follow the instructions in the Generic Repair Manual – Build swap for customization of the software.



5 Reassembly

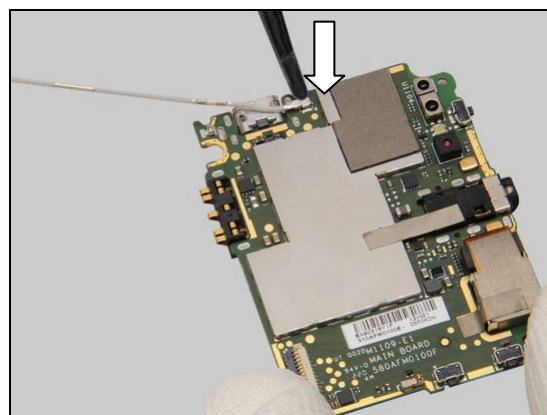
The reassembly is done in the following order:

1. Main PBA (a) & RF Cable (b)
2. FPC Link (a) & Tape ZIF Connector (b)
3. Cover Front Assy (a) & Tape Connector (b)
4. Sub Board Assy (a) & Tape Connector (b)
5. Rear Cover Assy
6. Core Unit Label
7. Battery
8. Cover Battery Assy

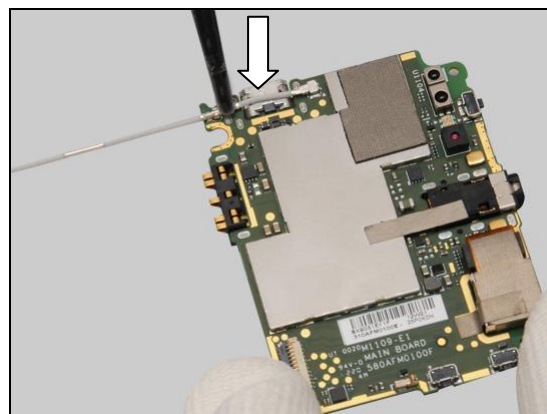


5.1 RF Cable

Press to connect this end of the RF Cable.

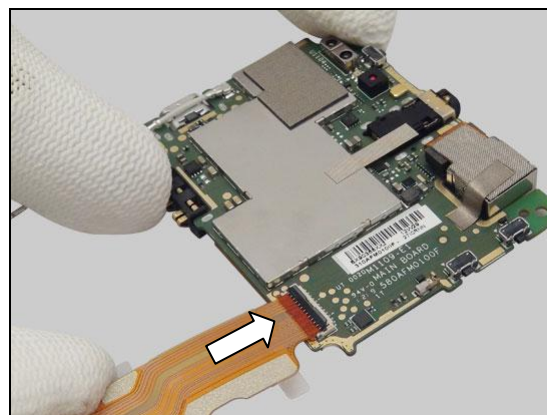


Press to snap the hook as shown.



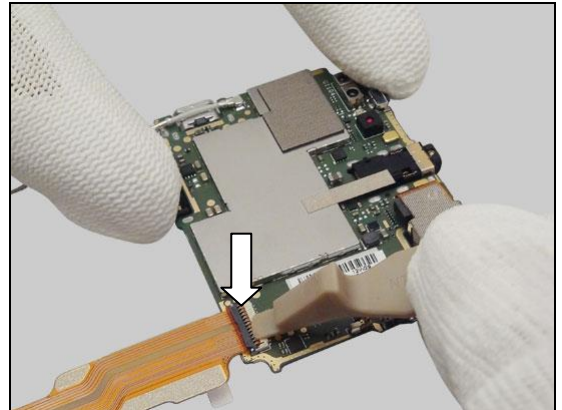
5.2 FPC Link & Tape ZIF Connector

Insert a new FPC Link to the ZIF connector of the Main PBA.



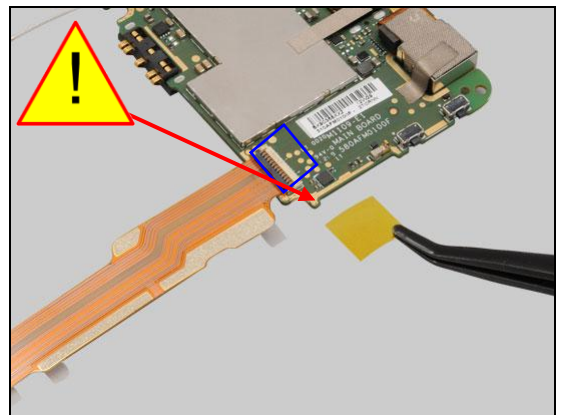
Reassembly

Lock the ZIF connector.

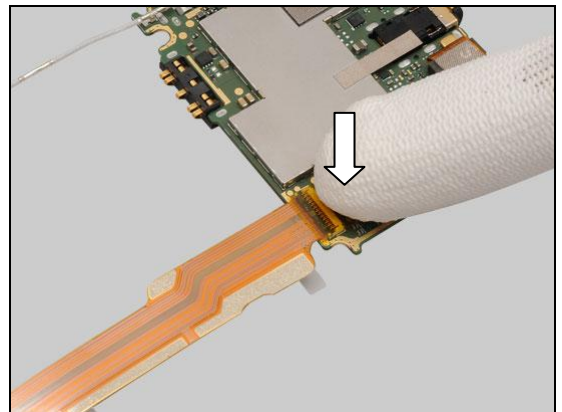


Attach a new Tape ZIF Connector on the ZIF connector as indicated by the blue rectangle.

Be careful! Do not cover the gold area!

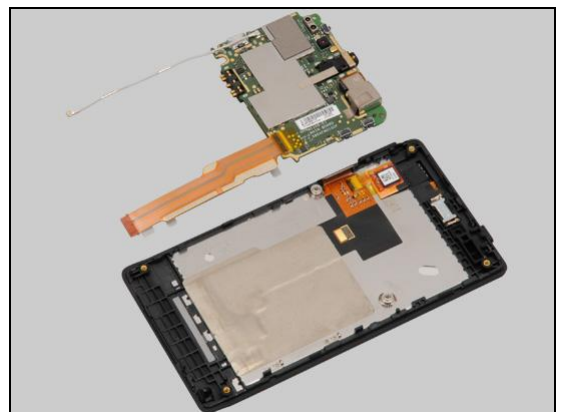


Press along to secure its attachment and position.



5.3 Cover Front Assy & Tape Connector

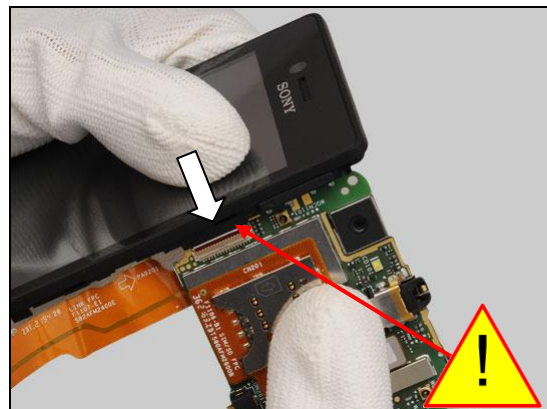
Prepare the PBA unit and the Cover Front Assy as shown in picture.



Reassembly

Gently insert the FPC of the Cover Front Assy into the ZIF connector on the PBA unit.

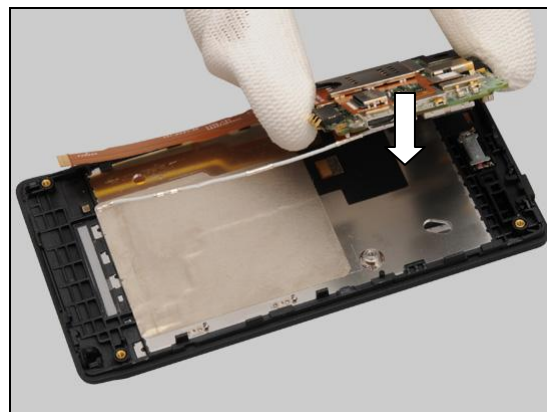
Be careful! Do not damage the FPC of the Front Cover Assy!



Lock the ZIF connector.

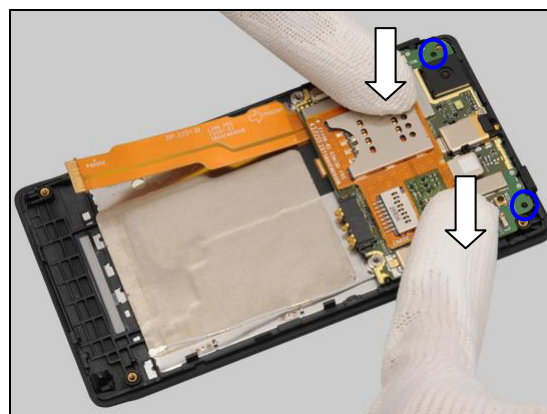


Securely place the PBA unit on the Cover Front Assy as shown.



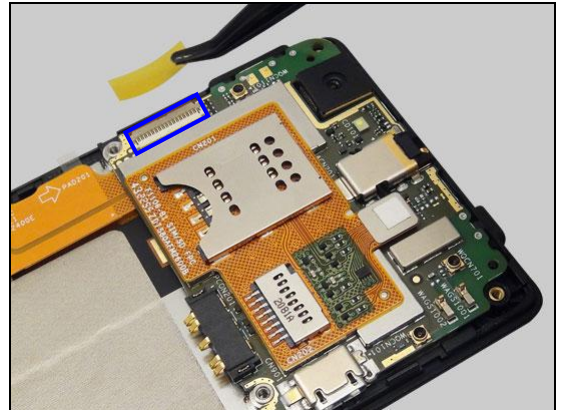
Press to secure its position as indicated by blue circles.

Be careful! Do not touch the pins and pads on the PBA!

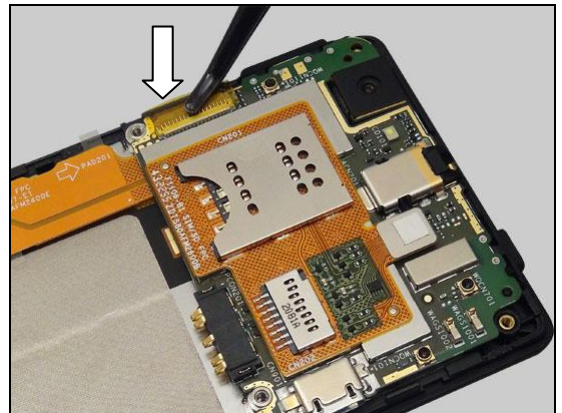


Reassembly

Attach a new Tape Connector on the ZIF connector as shown.

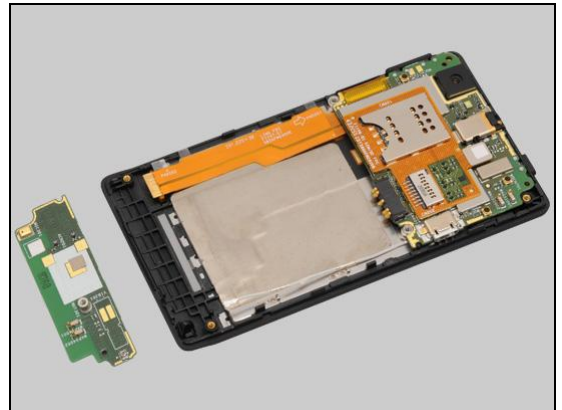


Press along to secure its attachment and position.

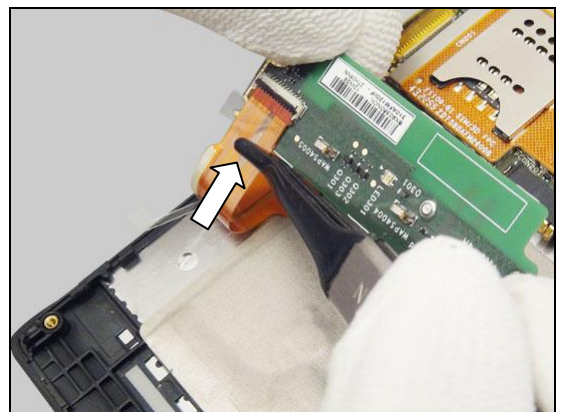


5.4 Sub Board Assy & Tape Connector

Prepare the Sub Board Assy and the front unit as shown.

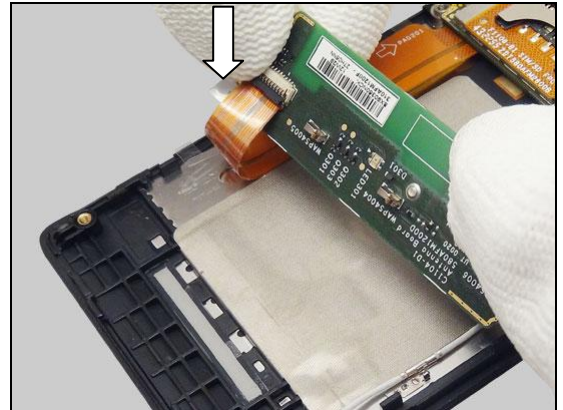


Insert this end of the FPC Link into the ZIF connector by using a Flex Film Assembly Tool as shown.



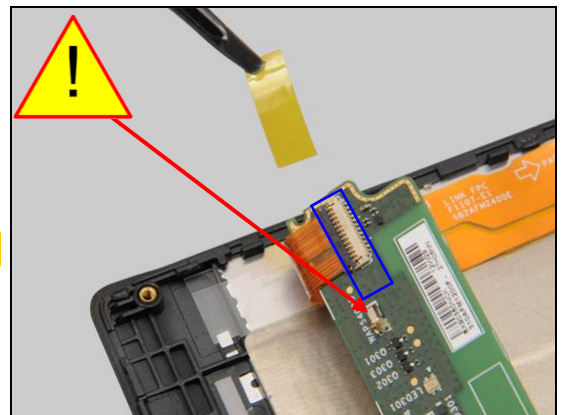
Reassembly

Lock the ZIF connector with finger.



Attach a new Tape Connector along the left side of the ZIF connector as shown.

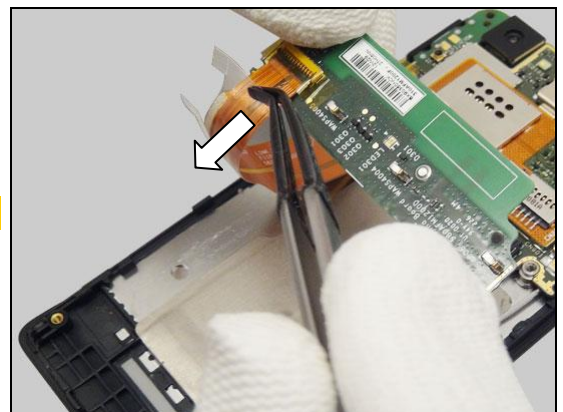
Be careful! Do not cover the contact pin!



Press along to secure its attachment and position.

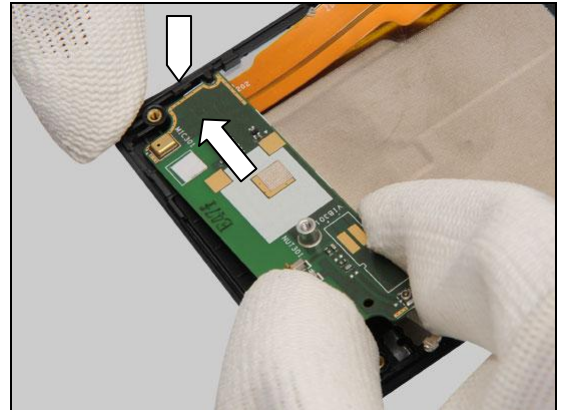


Gently peel off all protective films!

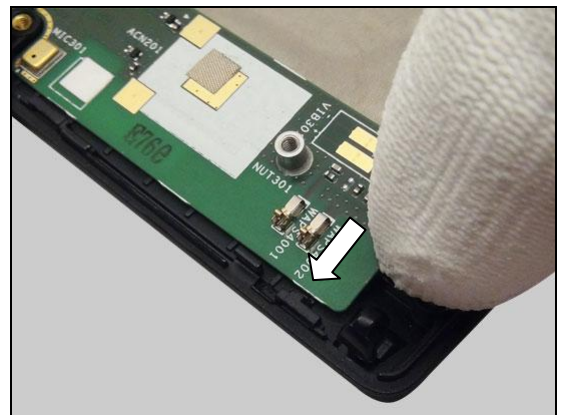


Reassembly

Insert this side of the Sub Board Assy into the hook of the Cover Front Assy.

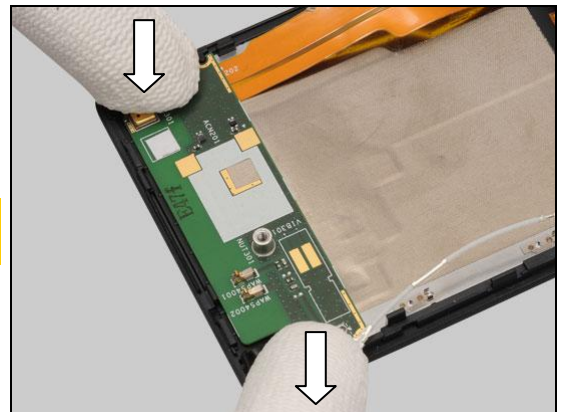


Do the same to snap the second hook.

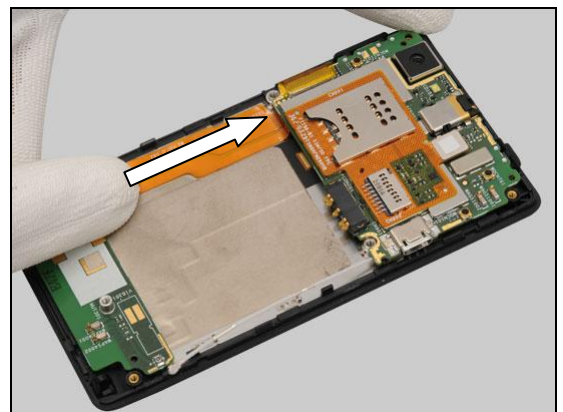


Press to secure its position.

Be careful! Do not touch the pins on the Sub Board Assy!

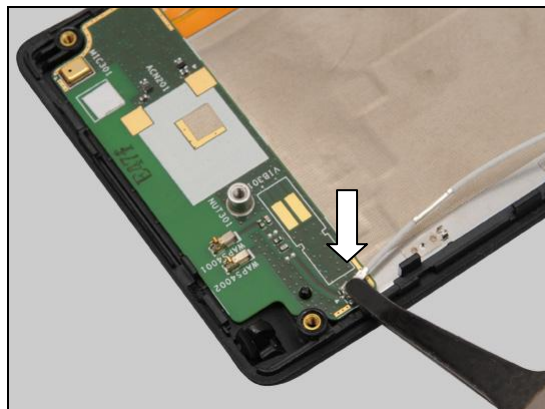


Press along the FPC Link to make it securely attached on the Front Cover Assy, and push the rest of the FPC Link into the gap between the PBA and the Cover Front Assy as shown.

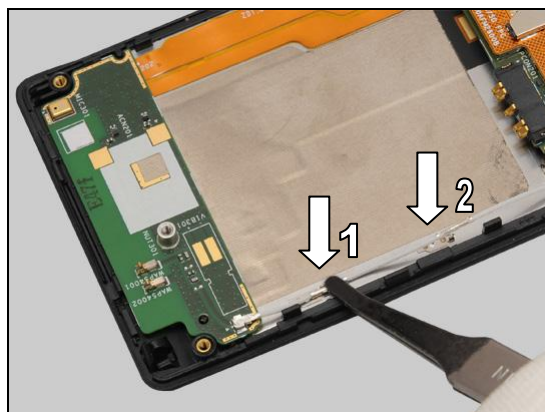


Reassembly

Connect this end of the RF Cable by using a Flex Film Assembly Tool.

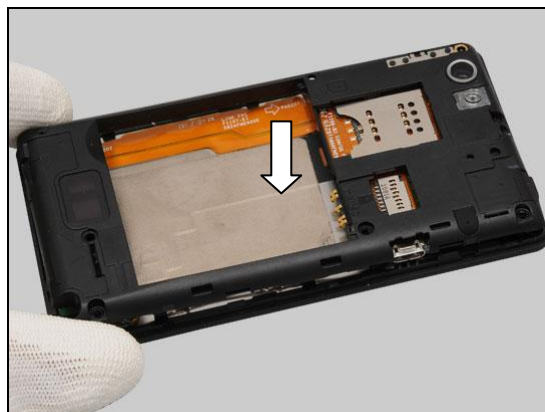


Press to snap the two hooks.

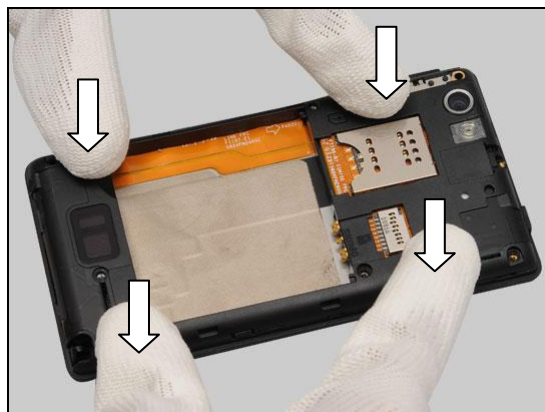


5.5 Rear Cover Assy

Securely place the Rear Cover Assy on the front unit.



Press to snap the hooks of the Rear Cover Assy.

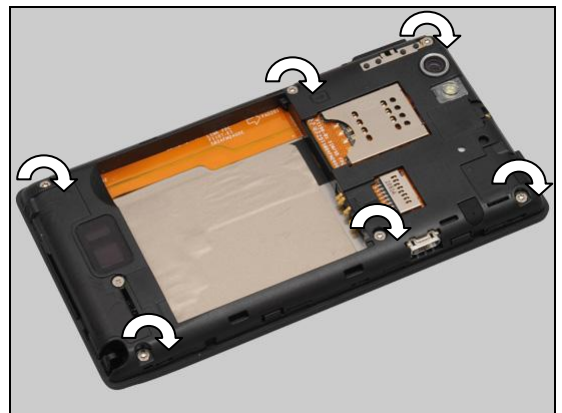


Reassembly

Apply 8 ± 0.5 Ncm torque when tightening the screw with Bits (Philip screw).

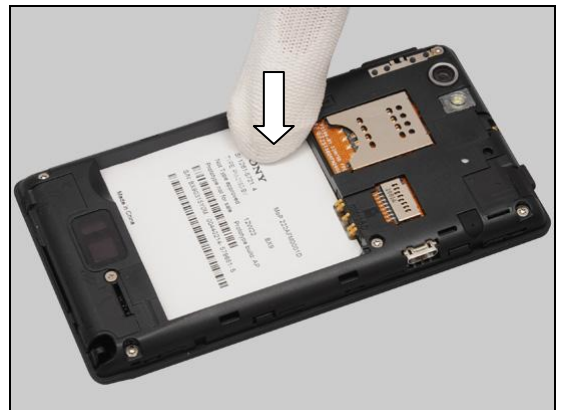


Apply 8 ± 0.5 Ncm torque when tightening the six screws with Bits (T5).



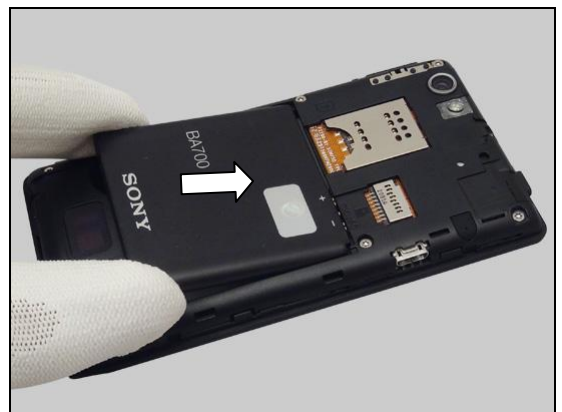
5.6 Core Unit Label

Attach a new Label in the socket and press along to secure its attachment.



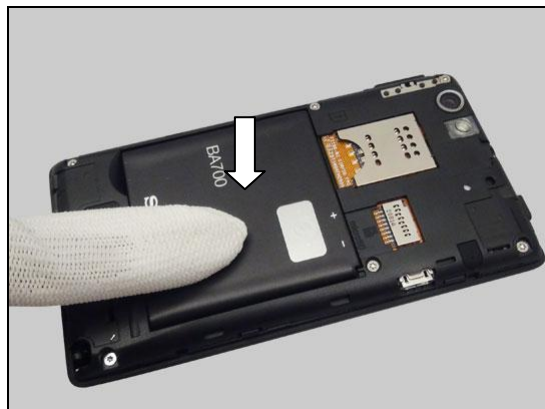
5.7 Battery

Place the Battery into the socket.



Reassembly

Press the bottom of the Battery to secure its position.

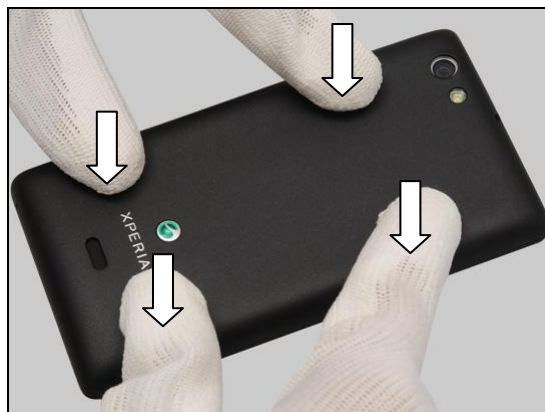


5.8 Cover Battery Assy

Place the Cover Battery Assy on the proper position.



Press to snap the hooks of the Cover Battery Assy.



Press to snap the hooks of this side.



Reassembly

Do the same on the opposite side.



6 Revision History

Rev.	Date	Changes / Comments
1	2012-Sep-7	Initial release
2	2012-Oct-15	Touch Panel calibration added